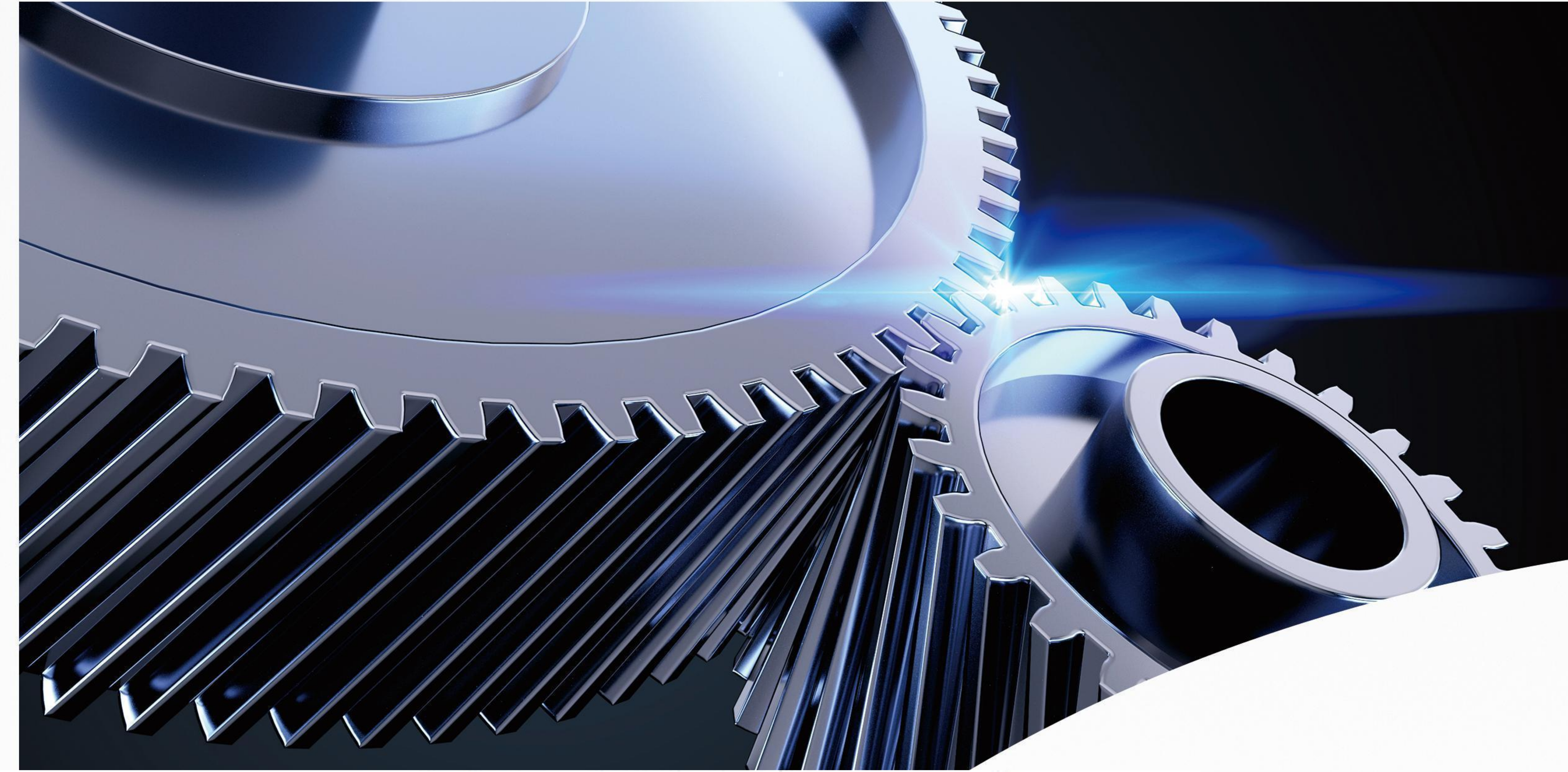




我们的目标是：为客户创造价值  
*Creaf values for customer*



**VCON GLOBAL TRADING FZE - LLC**

Business Centre, Sharjah Publishing

City Free Zone, Sharjah

United Arab Emirates

Email: [info@vcongt.com](mailto:info@vcongt.com)

Phone: +971 50 768 9645



م م ذ - ح م م للتجارة غلوبال فيكون

للنشر الشارقة مدينة، الأعمال مركز

الشارقة، الحرة المنطقة

المتحدة العربية الإمارات

الإلكتروني البريد: [info@vcongt.com](mailto:info@vcongt.com)

هاتف: +971 50 768 9645





# 生产现场

Working Sites

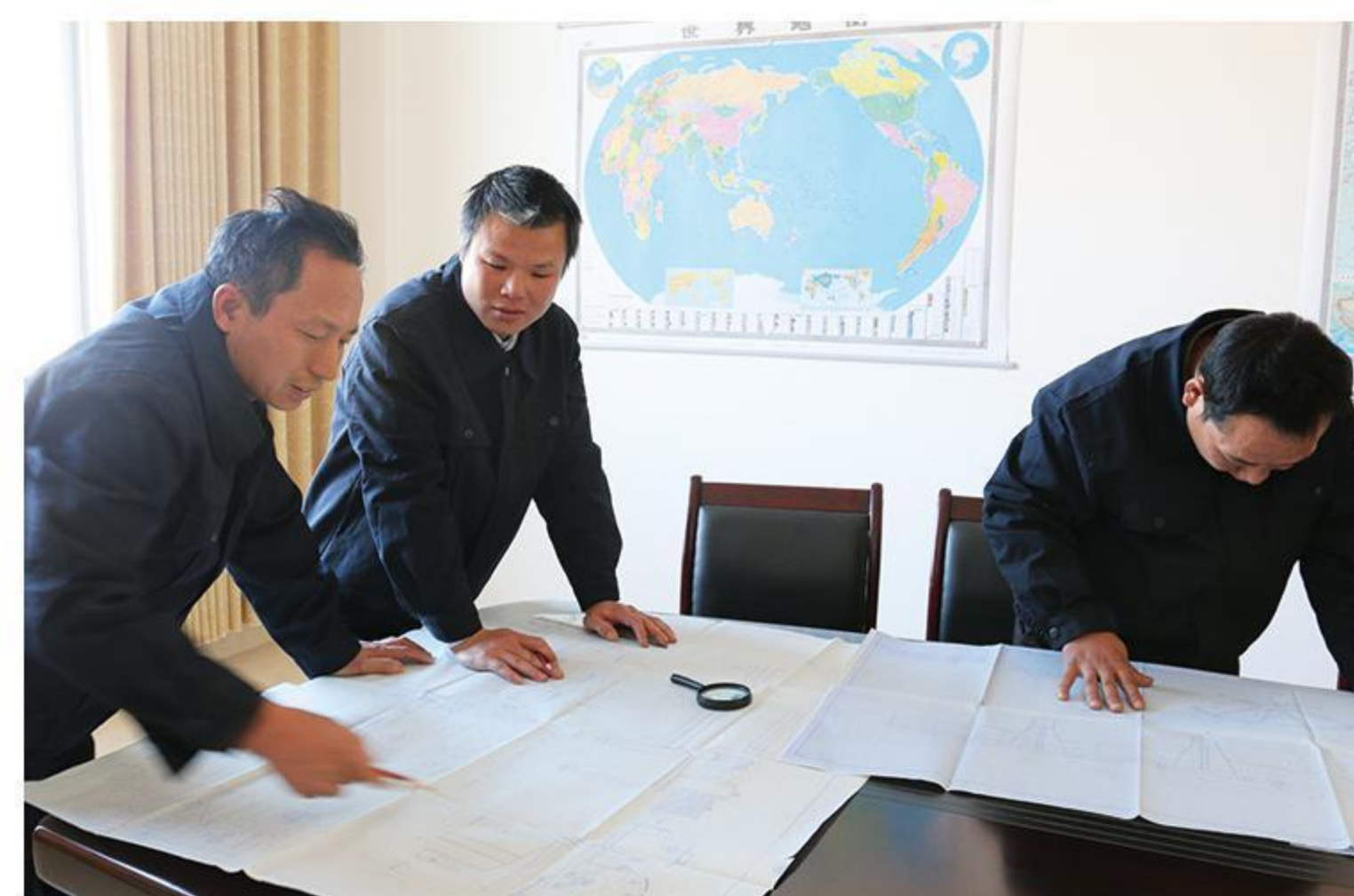






# 公司实拍

Company photo







一、给矿设备  
Feeding Equipment

- 01 槽式给料机  
Chute Feeder
- 02 摆式给料机  
Oscillating Feeder
- 03 圆盘给料机  
Disk Feeder
- 04 振动给料机  
Vibrating Feeder



二、筛分设备  
Screening Equipment

- 05 SZZ中心振动筛  
SZZ Series Self-Centering Vibrating Screen
- 06 YA型圆振动筛  
YA Circular Vibrating Screen



三、破碎设备  
Crushing Equipment

- 07 鄂式破碎机  
Jaw Crusher
- 08 弹簧圆锥破碎机  
Spring Cone Crusher
- 09 PFY反击破碎机  
Impact Crusher
- 10 对辊破碎机  
Double Roller Crusher
- 11 锤式破碎机  
Hammer Crusher
- 12 复合式制砂机  
Compound Sand Making Machine
- 13 锤式打砂机  
Hammer Mill



四、磨矿设备  
Grinding Equipment

- 14 水泥球磨机  
Cement Ball Mill
- 15-16 GM系列滚动轴承球磨机  
GM Series Rolling Bearing Ball Mill
- 17 湿式格子型球磨机  
Wet Grid Ball Mill
- 18 湿式溢流型球磨机  
Wet Overflow Ball Mill
- 19 棒磨机  
Rod Mill
- 20 碾金机  
Wet Pan Mill



五、分级设备  
Classifying Equipment

- 21 轮斗洗砂机  
Wheel Sand Washing Machine
- 22 圆筒洗矿机  
Rotary Trommel Washing Machine
- 23-24 螺旋分级机  
Spiral Classifier
- 25-26 FX型水力旋流器  
FX Hydrocyclone
- 27 脱水筛  
Dewatering Screen
- 28 滚筒筛  
Trommel Screen
- 29 双螺旋洗矿机  
Double Spiral Log Washer



六、搅拌设备  
Mixing Equipment

- 30 RJ单叶搅拌槽  
RJ Single Impeller Agitation Tank
- 31 SJ双叶轮浸出槽  
SJ Double Impeller Leaching Tank



七、浮选设备  
Flotation Equipment

- 32 XCF-KYF型浮选机  
XCF-KYF Flotation Machine
- 33 XJK型(A型)浮选机  
XJK (A) Flotation Machine
- 34 BS-K型浮选机  
BS-K Flotation Machine
- 35 BF型浮选机  
BF Flotation Machine
- 36 SF型浮选机  
SF Flotation Machine



八、磁选设备  
Magnetic Separation Equipment

- 37-38 CTS (N、B) 永磁筒式磁选机  
CTS (N, B) Permanent Magnet Cylinder Type Magnetic Separator
- 39 SGB湿式强磁板式磁选机  
SGB Wet Plate Type High Gradient Magnetic Separator
- 40 三盘带式磁选机  
Three Disc Magnetic Separator
- 41 CXJ-A干粉永磁筒式磁选机  
CXJ-A Dry Drum Permanent Magnetic Separator
- 42 CGD型高压电选机  
High Voltage Separator



九、重选设备  
Gravity Separation Equipment

- 43 螺旋溜槽  
Spiral Chute
- 44 6S-选矿摇床  
6S- Shaking Table
- 45 离心选矿机  
Centrifugal Concentrator
- 46 皮碗离心机  
Centrifuge Bowl Concentrator
- 47 隔膜跳汰机  
Diaphragm Jig Machine
- 48 锯齿波跳汰机  
Saw-tooth Wave Jig Machine



十、浓缩设备  
Thickening Equipment

- 49 NZ(F)型中心传动浓缩机  
NZ(F) Central Transmission Thickener
- 50 NG型周边传动浓缩机  
NG Peripheral Transmission Thickener
- 51 GX型高效浓缩机  
GX Type High Efficiency Thickener



十一、烘干设备  
Drying Equipment

- 52 HT转筒烘干机  
HT Rotary Dryer



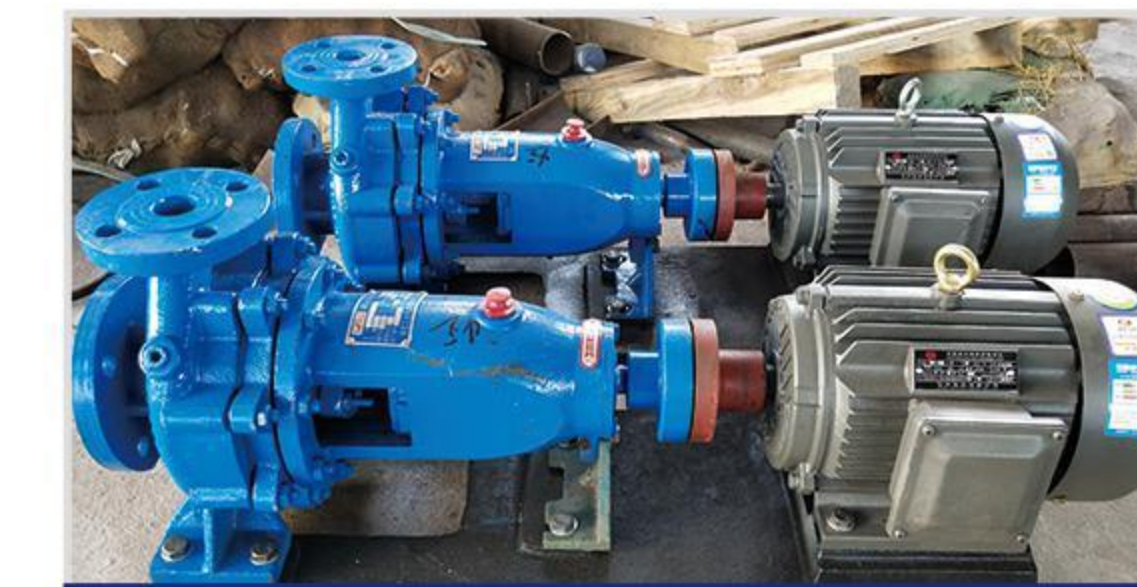
十二、过滤设备  
Filter Equipment

- 53 陶瓷过滤机  
Ceramic Disc Filter
- 54 GW型圆筒外滤式过滤机  
GW Drum Filter



十三、输送设备  
Conveying Equipment

- 55 NE型板链高效斗式提升机  
High Efficiency Bucket Hoist With NE Plate Chain
- 56 TD75型皮带输送机  
TD75 Belt Conveyor



十四、泵类设备  
Slurry Pump Equipment

- 57-58 渣浆泵  
Slurry Pump



十五、熔炼设备  
Smelting Furnace

- 59 高频感应熔炼炉  
High Frequency Smelting Furnace
- 60 中频感应熔炼炉  
Medium Frequency Smelting Furnace





## 槽式给料机 Chute Feeder

### 产品简介 Product Introduction

槽式给料机广泛应用于化工、矿山、冶金、建筑、选矿、煤炭等行业，主要作用是把物料由储料仓送往受料的装置。槽式给料机安装在储料仓下部，物料通过出料口进入槽体，传动机通过连杆带动底板做往复摆动，使物料通过方形出料口均匀送出，通过调节偏心轮改变连杆行程大小实现改变给料能力。可将颗粒状、粉状物料均匀、连续、定量地送至受料装置。特别适用于自动配料、定量包装、生产流程自动化、给料精度要求高的场合。

Chute feeder is widely used in chemical industry, mining, metallurgy, construction, mineral processing, coal and other industries. The main function is to send the material composed of buffer bin to the equipment. The Chute feeder is a storage bin installed at the bottom. The material enters the bathtub through the discharge port, and the drive motor swings back and forth through the link drive layer. The square of the discharge port (even if sent, the stroke is changed by adjusting the eccentric link). The ability to achieve size. Granular and powder materials can be fed uniformly, continuously and quantitatively, especially for automatic batching, quantitative packaging, production process automation, and high feeding accuracy requirements.

### 产品特点 Product Features

1. 结构简单，喂料均匀，连续性能好
2. 操作方便可以均匀地调节给矿量
3. 传动平稳，传动效率高

1. Simple structure, uniform feeding, continuous performance is good.
2. Convenient operation can evenly adjust the amount of feed.
3. Smooth transmission and high efficiency transmission.



### 技术参数 Technical Parameters

规格型号 Model	进料口尺寸 Outlet Dimensions (mm)	最大给料粒度 Max Feed Particle Size (mm)	给料能力 Feeding Capacity (t/h)	电机型号 Motor Model	电机功率 Motor Power (kw)	重量 Weight (kg)
CG400*400	400*400	100	25-30	Y112M-4	2.2	535
CG600*500	600*500	200	10-50	Y112M-4	4	1045
CG700*500	700*500	250	10-60	Y112M-4	4	1100
CG1240*980	1240*980	350	36-90	Y112M-6	7.5	1710

## 摆式给料机 Oscillating Feeder

### 产品简介 Product Introduction

摆式给料机是实现连续不断而均匀地给料的机械设备，它安装在料槽或漏斗的下方，干燥而不易结块的物料，如矿石、煤块等，但不适宜输送粉末状的物料，易产生堵塞影响进料，同时也能引起粉末飞扬而影响工作场所的清洁，在该机不工作时还可作闭锁器使用，本机由于采用钢轮减速机，其结构尺寸甚为紧凑，并装有可靠的密封装置，不易使灰尘脏物进入内部而影响工作。

Oscillating Feeder is a mechanical device that realizes continuous and uniform feeding. It is installed below the trough or hopper. It is dry and not easy to agglomerate materials, such as ore and coal, etc., but it is not suitable for conveying powder. The materials are prone to clogging and affect the feed. At the same time, they can cause the powder to fly and affect the cleanliness of the workplace. When the machine is not working, it can also be used as a lock. Because the machine uses a steel wheel alkali speed controller, Structure size is very Compact and equipped with a reliable sealing device, it is not easy to let dust and dirt enter the interior and affect the work.

### 产品特点 Product Features

1. 该设备构造简单，价格便宜，管理方便
2. 摆式给料机适用于粒度为120毫米以下的小块物料及粒状物料

1. The equipment with simple structure, cheaper price and convenient in management.
2. Oscillating Feeder is suitable for small materials and granular materials with a particle size of less than 120mm.



### 技术参数 Technical Parameters

规格型号 Model	进料口 L*W L*W (mm)	出料口 Outlet L*W (mm)	偏心轮行程 Stroke Of Eccentric Wheel (mm)	摆动次数 Frequency (次/分)	最大给料粒度 Max Feed Particle Size (mm)	最大给料能力 Feed Capacity (t/h)	电机型号 Motor Model	电机功率 Motor Power (kw)	电机转速 Rotating Speed Of The Motor (r/min)	重量 Weight (kg)
300*300	300*300	300*30-125	0-90	46	30	6.5	Y80M2-4	0.75	1390	272
400*400	400*400	400*50-130	0-170	46	35	12	Y90S-4	1.1	1400	558
600*600	600*600	600*50-150	0-200	46	50	25	Y90L-4	1.5	1400	613





## 圆盘给料机 Disk Feeder

### 产品简介 Product Introduction

DK型圆盘给料机为吊式密封式，适用于粒度20mm以下粉状物料给料。该给料机产品结构复杂，比较耐用。吊装于粉矿仓底口上，通过调节刮板位置来调整给矿量。

DK type disk feeder is a hanging type seal, which is suitable for feeding powder materials with a particle size of less than 20mm. The structure of the feeder is complex and relatively durable. Lifted on the bottom of the powder mine bin, adjust the amount of ore by adjusting the position of the scraper.

### 产品特点 Product Features

1. 给料均匀，不易造成堵塞
  2. 安装方便操作简单，快速上手
  3. 体积小，占地面积小，节省空间
  4. 结构简单，运行可靠，调节安装方便
  5. 重量轻、体积小、工作可靠、寿命长、维护保养方便
1. Uniform feeding and it is not easy to cause blockage.
  2. Easy to installation and operation.
  3. Small size, small footprint, saving space.
  4. Simple structure, reliable operation and convenient installation.
  5. Light weight, small size, reliable work, long life, easy maintenance.

### 技术参数 Technical Parameters

规格型号 Model	圆盘直径 Diameter Of Disc (mm)	生产能力 Capacity (t/h)	物料粒度 Feed Particlesize (mm)	安装形式 Externul Hanged	电动机Motor		重量 Weight (kg)
					型号Model	功率Power (kw)	
DK6	600	0.6-3.9	25	吊式	Y90L-6 JZTY21-6	1.1	403
DK8	800	1.4-7.6	30		Y90L-6 JZTY21-4	1.1	555
DK10	1000	2.5-16.7	40		Y100L-6 JZTY22-4	1.5	827
DK13	1300	4.2-27.9	50		Y132S-6 JZTY32-4	3	1150
DK16	1600	7-48.6	60		Y132M1-6 JZTY41-4	4	2125
DK18	1800	9.2-60	70		Y132M2-6 JZTY42-4	5.5	2900
DK20	2000	13.6-88	80		Y132M2-6 JZTY42-4	5.5	3140



## 振动给料机 Vibrating Feeder

### 产品简介 Product Introduction

振动给料机在工作过程中可把块状、颗粒状物料从贮料仓中均匀、定时、连续地送入受料装置，在砂石生产线中可为破碎机械连续均匀地喂料，并对物料进行粗筛分，广泛应用于冶金、煤矿、选矿、建材、化工、磨料等行业的破碎、筛分联合设备中。

The vibrating feeder can uniformly, regularly and continuously feed the bulk and granular materials from the storage bin into the receiving device during the working process. It can continuously and uniformly feed the crushing machinery in the sand and stone production line. It is widely used in crushing and screening joint equipment in metallurgy, coal mining, mineral processing, building materials, chemical industry, abrasives and other industries.

### 产品特点 Product Features

1. 特殊栅条设计，可防止物料堵塞
  2. 防止耐磨件被小料磨损，把小料分出来，增加产量
  3. 振动平稳，工作可靠；栅条间隙可调；耐磨件比较多
1. Special grid design can prevent material from being blocked.
  2. Prevent wear parts from being worn by small materials, separate small materials and increase output.
  3. The vibration is stable and the work is reliable; the gap of the grid is adjustable; there are more wear-resistant parts.



### 技术参数 Technical Parameters

规格型号 Model	漏斗尺寸 Size Of Funnel (mm)	最大进料粒度 Max Feeding Size (mm)	产量 Capacity (t/h)	功率 Power (kw)	重量 Weight (kg)	外形尺寸Dimensions (L*W*H) (mm)
GZD600*1800	600*1800	300	30-80	1.1*2	1050	2200*1100*600
GZD-800*3000	850*3000	400	80-120	1.5*2	3195	3110*1600*1600
GZD-960*3800	960*3800	500	120-210	2.2*2	3980	3850*1950*1630
GZD-1100*4200	1100*4200	580	200-430	3.7*2	5570	4400*2050*1660
GZD-1100*4900	1100*4900	580	280-500	5.5*2	6520	5200*2050*1700
GZD1300*5200	1300*5200	650	450-600	7.5*2	8200	5200*2350*1750
ZSW-960*3800	960*3800	500	90-200	11	3980	3882*2224*2121
ZSW-1100*4900	1100*4900	580	180-380	15	5320	4957*2500*1365
ZSW-1300*4900	1300*4900	750	250-450	22	5900	4957*2580*2083





## SZZ系列自定中心振动筛 SZZ Series Self-Centering Vibrating Screen

### 产品简介 Product Introduction

SZZ型自定中心振动筛运动轨迹为圆形，对中细粒度的物料进行分级，是我国应用最为广泛的传统型振动筛，对中细粒度的物料进行分级，是我国应用最为广泛的传统型振动筛。结构主要由筛箱、激振器、悬挂装置及电动机等组成。电动机经三角皮带，带动激振器主轴回转，由于激振器上不平衡重物的离心惯性力作用，使筛箱获振动，改变激振器偏心重，或获得不同振幅。

SZZ series self-centering vibrating screen is circular, which classifies medium and fine-grained materials. It is the most widely used traditional vibrating screen in China. It classifies medium and fine-grained materials. The structure is mainly composed of a screen box, an exciter, a suspension device and a motor. The motor drives the main shaft of the exciter to rotate through a triangle belt. Due to the centrifugal inertial force of the unbalanced organisms on the exciter, the screen box is vibrated and the excitation is changed. The vibrator is eccentric, or different amplitudes are obtained.



### 产品特点 Product Features

1. 由于筛箱振动强烈，减少了物料堵塞孔的现象，使筛子具有较高的筛分效率和生产率
2. 构造简单、拆换筛面方便
3. 由于皮带轮小心线和轴承中心线不在同一直线上，而能够消除皮带的振动现象，减少皮带的疲劳和磨损，从而可以增大筛子的振幅，进一步提高生产率

1. Due to the strong vibration of the screen box, the phenomenon of materials blocking the holes is reduced, so that the screen has high screening efficiency and productivity.
2. The structure is simple and the screen surface is easy to disassemble and replace.
3. Because the belt pulley care line and the center line of the bearing are not on the same straight line, it can eliminate the vibration of the belt and reduce the fatigue and wear of the belt, which can increase the amplitude of the sieve and further increase productivity.

### 技术参数 Technical Parameters

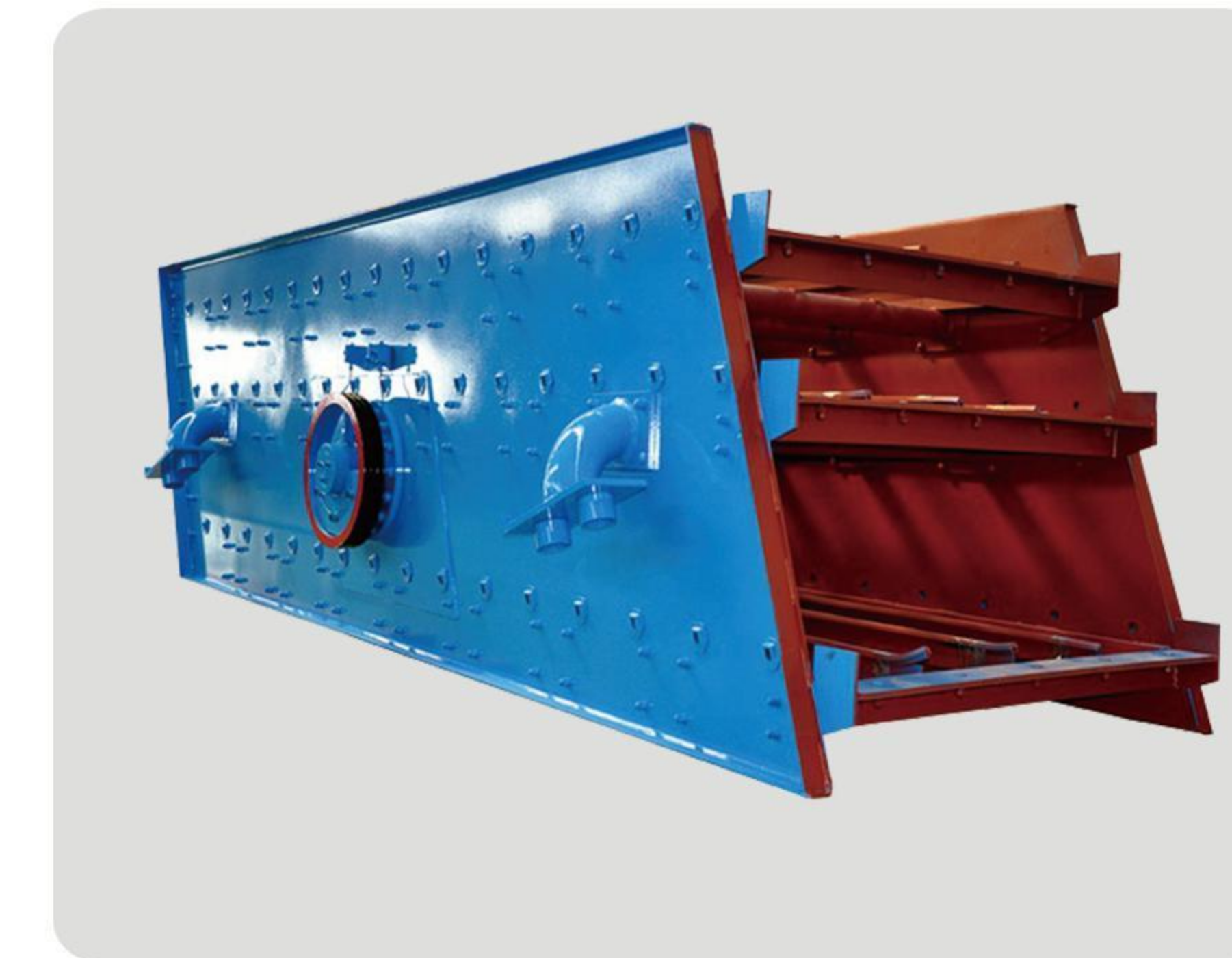
规格型号 Model	筛面层数 Number Of Layers In Screen	最大进料大小 Max Feeding Size (mm)	筛孔大小 Mesh Size (mm)	处理能力 Capacity (t/h)	振动频率 Frequency Of Oscillation (r/min)	倾斜角度 Angle Of Inclination (°)	功率Power (kw)	外形尺寸Dimensions(L*W*H) (mm)	重量 Weight (kg)
SZZ600×1200	1	40	2-25	10-20	1000	15-25	2.2	1370*890*330	340
SZZ <sub>2</sub> 600×1200	2	40		10-20	1000	15-25	2.2	1370*890*430	360
SZZ900×1800	1	40	2-40	20-25	1000	15-25	2.2	2150*1358*575	550
SZZ <sub>2</sub> 900×1800	2	40		20-30	1000	15-25	3	2489*1358*770	620
SZZ1250×2500	1	100	2-40	50-150	850	15-20	5.5	2762*1714*680	1100
SZZ <sub>2</sub> 1250×2500	2	150		50-150	850	15-20	5.5	2702*1714*740	1300
SZZ1500×3000	1	100		70-200	850	15-25	7.5	3320*1449*787	2100

## YA型圆振动筛 YA Circular Vibrating Screen

### 产品简介 Product Introduction

YA型圆振动筛采用高效振动电机激振、钢簧或橡胶弹簧减震、耐磨材质筛板(筛网)、密封式或敞开式筛箱及国内外先进技术和自同步振动原理打造而成，可单层和双层使用，具有寿命长、噪音低、筛分效率高等特点，主要适用于煤炭、冶金、矿山、发电、建材工业、水利工程、轻工和化工等行业对煤、矿石、焦炭等散状物料分级的一种高效率筛分机械。

YA circular vibrating screen is made of high-efficiency vibrating motor, steel spring or rubber spring, wear-resistant material screen (screen), sealed or open screen box and advanced technology and self-synchronous vibration principle at home and abroad. It can be used in single layer and double layer. It has the characteristics of long life, low noise and high screening efficiency. A high efficiency screening machine for the classification of coal, ore, coke and other dispersed materials.



### 工作原理 Working principle

筛体依靠两台相同的振动电机做相反方向自同步旋转，使整个筛机在减振弹簧的支撑下做直线振动，物料从入料端落入筛箱后，迅速前进松散透网，完成筛分。

The screen body relies on two identical vibration motors to rotate in opposite directions and synchronize synchronously, so that the entire screen machine vibrates linearly under the support of the damping spring. After the material falls into the screen box from the feed end, it quickly advances loosely through the screen to complete the screen Minute.

### 技术参数 Technical Parameters

规格型号 Model	筛网层数 Number Of Sieve Layers	筛网面积 Screen Area (m <sup>2</sup> )	筛孔尺寸 Opening Size (mm)	给料粒度 Feeding Size(mm)	生产能力 Capacity (t/h)	振动频率 Freque-ncy (v.p.m)	功率Power (kw)	重量 Weight (kg)
YA1848	1	7.5	6-50	≤200	150-525	845	15	6289
2YA1848	2	7.5	6-50	≤200	150-525	845	15	6945
YAH1848	1	7.5	30-150	≤50	250-1000	755	13	7122
2YAH1848	2	7.5	30-150	≤400	250-1000	755	15	7740
YA2148	1	10	6-50	≤210	180-630	748	18.5	9287
2YA2148	2	10	6-50	≤210	180-630	748	22	10532
YAH2148	1	10	13-200	≤400	270-1200	708	18.5	10430
2YAH2148	2	10	30-150	≤200	270-1200	708	22	11190
YA2160	1	12	3-80	≤200	230-800	748	18.5	9926
2YA2160	2-12	6-50	/	≤200	230-800	748	22	11249
YAH2160	1	12	30-150	≤400	350-1500	708	30	12490
2YAH2160	2	12	30-150	≤400	350-450	708	30	13858
YA2448	1	11	6-50	≤200	200-700	748	18.5	9834
YAH2448	1	11	6-50	≤400	310-1300	708	30	11830
2YAH2448	2	11	30-150	≤400	310-1300	708	30	13012
YA2460	1	14	6-50	≤200	260-780	748	30	12240
2YA2460	2	14	6-50	≤200	260-780	748	30	13583
YAH2460	1	14	30-150	≤400	400-1700	708	30	13096
2YAH2460	2	14	30-150	≤400	400-1700	708	30	14420





## 颚式破碎机 Jaw Crusher

### 产品简介 Product Introduction

PE颚式破碎机采用高锰钢耐磨材料制造，重量轻，强度及刚度高，能耗低。不仅大大减少设备运行成本，而且进料粒度大、产品粒度均匀代表着中国初级破碎产品制造的领先水平。PEX颚式破碎机以其低转速，高稳定性，大产量，低设备运行成本。充分保证了矿山冶金、建材、水利、化工等各个行业客户的破碎需求，在中国二级破碎产品中占据着不可撼动的领导地位。

PE jaw crusher is made of high manganese steel wear-resistant material, light weight, high strength and rigidity, low energy consumption not only greatly reduces equipment operating costs, but also has a large feed particle size and uniform product particle size represents the leading Chinese primary crushing product manufacturing Horizontal. PEX jaw crusher is characterized by its low speed, high stability, large output and low equipment running cost. It fully guarantees the crushing needs of customers in various industries such as mining metallurgy, building materials, water conservancy, and chemical industries, and occupies an unshakable leadership position in China's secondary crushing products.

### 产品特点 Product Features

1. 经典的设计，优秀的制造技术及材料经久耐用
2. 恰到好处的腔型设计
3. 排料口调整方便灵活
4. 可供选择的多种颚板
5. 选用最耐用的轴承
6. 高品质铸钢动颚总成

1. Classic design, excellent manufacturing technology and durable materials.
2. The right cavity design.
3. The discharge port can be adjusted conveniently and flexibly.
4. A variety of jaw plate to choose.
5. Adopt the most durable bearing.
6. High quality cast steel moving jaw assembly.



### 技术参数 Technical Parameters

规格型号 Model	进料口尺寸 Feed Port Size (mm)	最大进料尺寸 Max Feeding Size (mm)	排料口调节范围 Adjustable Range (mm)	处理能力 Capacity(t/h)	飞轮转速 Flywheel Speed (r/min)	功率 Power (kw)	重量 Weight (t)	外形尺寸Dimensions(L*W*H) (mm)
PE-150*250	150*250	125	10-40	1-3	250	5.5	0.6	720*660*850
PE-200*300	200*300	180	15-50	2-6	260	7.5	1	910*750*990
PE-200*350	200*350	180	18-70	3-10	260	11	1.3	1000*870*990
PE-250*400	250*400	210	20-60	3-13	300	15	2.8	1300*1090*1270
PE-400*600	400*600	340	40-100	15-40	275	30	5.7	1730*1730*1630
PE-500*750	500*750	425	50-100	20-70	275	55	10.3	1980*2080*1870
PE-600*900	600*900	520	65-130	50-150	250	75	15.5	2290*2290*2400
PE-750*1060	750*1060	630	80-140	80-220	250	110	28	2660*2430*2800
PE-870*1060	870*1060	660	200-260	290-336	250	110	31.5	2810*2430*2800
PE-900*1060	900*1060	685	230-290	160-400	250	110	33	2870*2420*2940
PE-900*1200	900*1200	860	230-290	200-250	200	132	31	3380*2870*3330
PE-1000*1200	1000*1200	850	195-265	315-500	200	110	55	3480*3876*3330
PE-1200*1500	1200*1500	1100	350-360	250-400	180	160	51	4200*3300*3500
PEX-150*750	150*750	120	18-48	8-25	320	15	3.8	1200*1530*1060
PEX-250*750	250*750	210	25-60	13-35	330	30	5.5	1380*1750*1540
PEX-250*1000	250*1000	210	25-60	16-52	330	37	7	1560*1950*1390
PEX-250*1200	250*1200	210	25-60	20-61	330	45	8.5	2140*1660*1500
PEX-300*1300	300*1300	250	20-90	16-105	300	75	11	2720*1950*1600

## 弹簧圆锥破碎机 Spring Cone Crusher

### 产品简介 Product Introduction

弹簧圆锥破碎机是最早的一种圆锥破碎机，破碎腔型由矿石用途决定，标准型适用于中碎，中型适用于细碎，短头型适用于超细碎。适于破碎坚硬与中硬矿石和岩石如铁矿石，石灰石，石英，花岗岩，玄武岩辉绿岩等，广泛用于冶金，建筑，筑路化学及磷酸盐等工业。

Spring cone crusher is the earliest cone crusher. The crushing cavity type is determined by the use of ore. The standard type is suitable for medium crushing, the medium type is suitable for fine crushing, and the short head type is suitable for super fine crushing. It is suitable for crushing hard and medium hard ores and rocks, such as iron ore, limestone, quartz, granite, basalt, diabase, etc. It is widely used in metallurgy, construction, road construction, chemical and phosphate industries.



### 技术参数 Technical Parameters

规格型号 Model	破碎锥直径 Cone Diameter (mm)	给料口尺寸 Inlet Size (mm)	给料尺寸 Feeding Size (mm)	排料口调节范围 Adjustable Range Of Discharge Port (mm)	功率 Power (kw)	偏心套转速 Speed (r/min)	生产能力 Capacity (t/h)	机重 Weight (t)
PYB-600/75	600	75	65	12-25	≤22	396	40	5.5
PYB-900/135	900	135	110	15-50	≤75	330	50-90	9.6
PYB-1200/170	1200	170	145	20-50	≤110	300	110-168	24.6
PYB-1750/250	1750	250	215	25-60	≤220	245	280-480	50.5
PYB-2100/350	2100	350	300	30-60	≤280	202	500-800	71.2
PYB-2200/350	2200	350	300	30-60	≤375	220	500-1000	87.5
PYZ-900/70	900	70	60	8-20	≤75	330	20-65	11.5
PYZ-1200/115	1200	115	100	8-25	≤110	300	42-135	25
PYZ-1750/215	1750	215	180	10-30	≤220	245	175-320	51
PYZ-2200/275	2200	275	230	10-30	≤375	220	200-580	84
PYD-600/40	600	40	35	3-13	≤22	396	12-23	5.5
PYD-900/50	900	50	40	3-13	≤75	330	15-50	11.5
PYD-1200/60	1200	60	50	3-15	≤110	300	18-105	25.3
PYD-1750/100	1750	100	85	5-15	≤220	245	75-230	50.5
PYD-2200/130	2200	130	100	5-15	≤375	220	125-350	91

注：PYB为标准型，PYZ为中型，PYD为短头型 Note: PYB is standard, PYZ medium, PYD short head



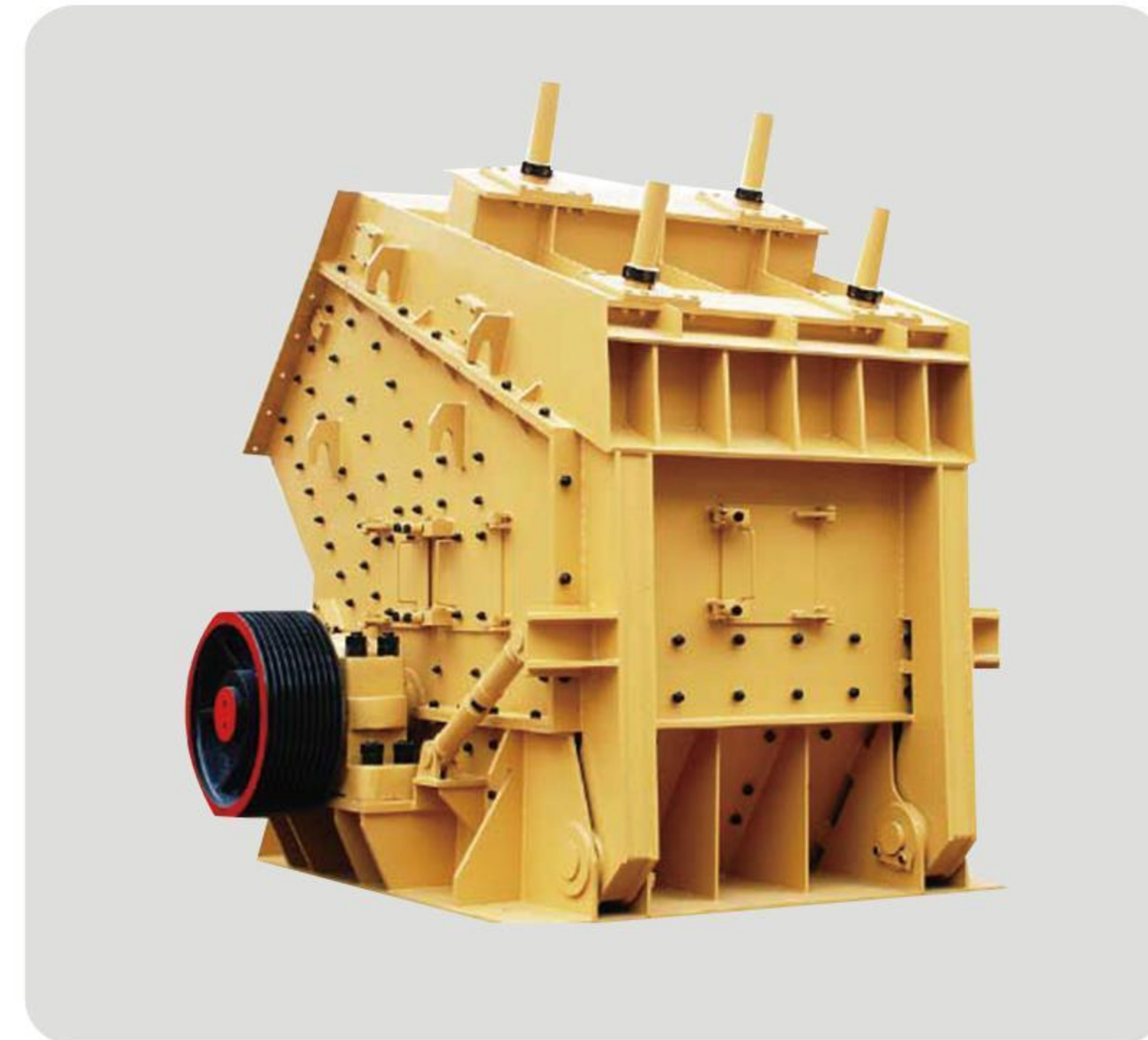


## PFY反击破碎机 Impact Crusher

### 产品简介 Product Introduction

PFY系列反击破碎机是我厂在吸收国内外先进技术，结合国内砂石行业具体工矿条件而制的最新一代反击破碎机。该设备具有破碎比大、破碎后物料呈立方体颗粒，耐磨件使用寿命长等优点，推广使用后为用户取得了明显的经济效益。物料进入机体后碰上高速旋转的锤头迎击，大块物料立即被打碎，碎料高速飞向支击板，进行第二次碰撞破碎，反弹物料与后续来的物料相互撞击破碎达到最终破碎目的。

The PFY series impact crusher is the latest generation of impact crusher made by our factory in absorbing advanced technology at home and abroad, combined with the specific industrial and mining conditions in the domestic sand and stone industry. This equipment has a large crushing ratio, the material after the crushing is cubic particles, and the wear-resistant parts are used. The advantages such as long lifespan have achieved obvious economic benefits for users after popularization. After the material enters the body, it hits a high-speed rotating hammer to meet the impact. The large piece of material is immediately broken. The broken material flies to the support plate at high speed for the second collision and crushing, achieve the purpose of crushing.



### 产品特点 Product Features

- |                  |   |
|------------------|---|
| 1. 构造轻易检查修理      | 1. The structure is easy to check and repair.   |
| 2. 过粉率低粒径好       | 2. Low powder rate and good particle size.  |
| 3. 破碎力度大，且成品粒度均匀 | 3. The crushing force is large, and the finished product has a uniform particle size. |
| 4. 性能稳定，运转良好     | 4. Stable performance and good operation.   |

### 技术参数 Technical Parameters

规格型号 Model	转子规格 Spec of Rotor (mm)	进料口尺寸 Inlet Size (mm)	最大进料边长 Max. Feed Edge (mm)	处理能力 Capacity (t/h)	电动机功率 Motor Power (kw)	重量 Weight (t)
PF-1007	φ 1000*700	400*730	300	35-50	30-55	9.45
PF-1010	φ 1000*1050	400*1080	350	50-80	55-75	12.2
PF-1210	φ 1250*1050	400*1080	350	70-120	110-132	14.4
PF-1214	φ 1250*1400	400*1430	350	95-160	132-160	16.85
PF-1316	φ 1300*1600	858*1640	350	150-220	200	19.5
PF-1010V	φ 1000*1050	400*1080	350	50-80	55-75	13.2
PF-1210V	φ 1250*1050	400*1080	350	70-120	110-132	15.1
PF-1214V	φ 1250*1400	400*1430	350	95-160	132-160	17.85
PF-1310V	φ 1300*1050	490*1170	350	70-120	110-160	13.5

## 对辊破碎机 Double Roller Crusher

### 产品简介 Product Introduction

对辊破碎机是利用两个高强度耐磨合金碾辊，相对旋转产生的高挤压力来破碎物料，物料进入两辊间隙（V型破碎腔）以后，受到两碾辊相对旋转的挤压力和剪切力作用，在挤轧、剪切和啮魔下，将物料破碎成需要的粒度，然后从机器下部的排料口排出，双辊破碎机配置两个碾辊，根据用户需要的粒度，碾面分为平碾面和堆焊碾面两种机型，若物料的抗压强度超200Mpa时均可选择加重机型。

Roller crushers use two high-strength wear-resistant alloy rollers to crush the material with high squeezing force generated by relative rotation. After the material enters the gap between the two rollers (V-shaped crushing chamber), it is squeezed by the relative rotation of the two rollers. Under the action of force and shearing force, under squeezing, shearing and encroaching, the material is crushed into the required particle size and then discharged from the discharge port in the lower part of the machine. The double roller crusher is equipped with two rollers, according to the needs of the user. The particle size and roller surface are divided into two types: flat roller surface and surfacing roller surface. If the compressive strength of the material exceeds 200Mpa, heavier models can be selected.



### 适用范围 Scope of Application

对辊破碎机适用于抗压强度小于300Mpa，水分小于35的硬、中硬、软物料的中碎和细碎作业。可广泛用于矿山、热电、水泥、陶瓷、冶金、化工、建材等行业。

The roller crusher is suitable for medium and fine crushing operations of hard, medium hard and soft materials with compressive strength less than 300Mpa and moisture less than 35. Can be widely used in mining, thermoelectricity, cement, ceramics, metallurgy, building materials and other industries.

### 产品特点 Product Features

- |                  |   |
|------------------|---|
| 1. 构造轻易检查修理      | 1. The structure is easy to check and repair.                               |
| 2. 过粉率低粒径好       | 2. Low powder rate, good particle size.                                     |
| 3. 破碎力度大，且成品粒度均匀 | 3. Large crushing force, and uniform particle size of the finished product. |
| 4. 性能稳定，运转良好     | 4. Stable performance and good operation.                                   |

### 技术参数 Technical Parameters

规格型号 Model	碾子直径 Roller Diameter (mm)	入料粒度 Feeding Size (mm)	平均出料粒度 Average Discharge Particle Size (mm)	产量 Output (t/h)	进料口尺寸 Inlet Size (mm)	出料口尺寸 Discharge Size (mm)	电机功率 Motor Power (kw)	外形尺寸 Dimensions(L*W*H) (mm)
2PGS800	φ 800	<40	0-8	10-30	500*500	1600*600	22*2	2750*2580*935
2PGS1000	φ 1000	<50	0-10	20-40	600*500	2000*700	45*2	3500*3200*1200
2PGS1200	φ 1200	<60	0-10	30-60	700*600	2400*800	55*2	3500*3270*1440
2PGS1500	φ 1500	<70	0-12	40-80	800*800	3000*900	75*2	3600*4200*1865
2PGS1800	φ 1800	<90	0-15	80-120	800*720	3600*900	90*2	4800*4200*1865
2PGS2000	φ 2000	<120	0-15	90-180	800*1000	4000*1200	132*2	5000*4800*2500





## 锤式破碎机 Hammer Crusher

### 产品简介 Product Introduction

锤式破碎机经高速转动的锤体与物料碰撞破碎物料，它具有结构简单，破碎比大，生产效率高特点，可作干、湿两种形式破碎，环锤式破碎机适用于矿山、水泥、煤炭、冶金、建材、公路、燃化等部门对中等硬度及脆性物料进行细碎。环锤式破碎机可根据用户要求调整篦条间隙，改变出料粒度，以满足不同用户的不同需求。

The hammer crusher crushes the material through the collision of the high-speed rotating hammer body and the material. It has the characteristics of simple structure, large crushing ratio, and high production efficiency. It can be used for dry and wet crushing. The ring hammer crusher is suitable for mining, Cement, coal, metallurgy, building materials, highways, fueling and other departments finely crush medium hardness and brittle materials. Ring hammer crusher can be adjusted according to user requirements, strip gap, change the granularity of discharge to meet the different needs of different users.



### 产品特点 Product Features

1. 结构简单，尺寸紧凑，自重较小，单位产品的功率消耗小
2. 生产率较高，破碎比大，产品的粒度小而均匀，呈立方体型，过度破碎现象少
3. 工作连续可靠，维护修理方便，易损零部件容易检查和更换

1. Simple structure, small space, light weight, energy saving.
2. The productivity is high, the crushing ratio is large, the particle size of the product is small and uniform, it is cubic, and the phenomenon of excessive crushing is less.
3. The working is continuous and reliable. with Convenient maintenance and repair, easy to check and replace vulnerable parts.

### 技术参数 Technical Parameters

规格型号 Model	转子转速 Rotor Speed (r/min)	进料口大小 Inlet Size (mm)	最大进料大小 Max Feeding Size (mm)	排料大小 Size Of Discharge (mm)	处理能力 Capacity (t/h)	功率 Power (kw)	重量 Weight (t)	外形尺寸Dimensions(L*W*H) (mm)
PC400×400	1500	145×450	100	0-30	5-8	7.5	0.9	844*942*878
PC600×400	1000	295×450	100	0-35	10-12	18.5	1.03	1054*972*1117
PC600×600	1000	295×570	100	0-35	12-18	45	2.14	1315*840*1501
PC800×600	1000	350×570	120	0-45	20-25	55	2.45	1515*2586*1040
PC800×800	1000	350×850	120	0-45	35-45	55	3.05	1515*2831*1040
PC1000×800	1000	580×850	200	0-45	25-40	110	6.5	3206*2210*1515
PC1000×1000	1000	580×1060	200	0-45	40-80	132	7.59	3514*2230*1515
PC1250×800	750	650×850	200	0-45	20-50	132	11.7	2630*1780*2050
PC1250×1250	750	650×1330	200	0-45	90-110	185	13.2	2630*2180*2050
PC1400×1400	750	1050×1540	250	0-45	120-170	280	17.2	2790*2800*2310
PC1600×1600	600	1500×1785	350	0-60	220-280	450	22.8	3350*3120*2660

## 复合式制砂机 Compound Sand Making Machine

### 产品简介 Product Introduction

物料由机器上部垂直落入高速旋转的叶轮内，在高速离心力的作用下与另一部分以伞状形式分流在叶轮四周的物料产生高速撞击与粉碎物料在互相撞击后，又会在叶轮和机壳之间以物料形成涡流多次的互相撞击、摩擦而粉碎，从下部直通排出，形成闭路多次循环，由筛分设备控制达到所要求的成品粒度

The material falls vertically from the upper part of the machine into the high-speed rotating impeller. Under the action of high-speed centrifugal force, it shunts another part of the material around the impeller in the form of an umbrella. The materials form eddy currents and collide with each other multiple times, rubbing and crushing, and discharged directly from the lower part, forming a closed circuit multiple cycles, controlled by the screening equipment to achieve the required particle size.



### 产品特点 Product Features

1. 细碎、粗磨功能，加工出来的石料成品粒形好，粒度均匀，针片状成品含量少
2. 设备本身受到的磨蚀少，消耗少，寿命更长，使设备长期保持良好的运行状态
3. 适应能力强，受物料含水量影响少，进料顺畅，排料不会出现堵塞
4. 采用弹性调节机构，进入不可破碎物可自动排出，不会造成设备损坏

1. Fine crushing and coarse grinding function, the finished stone material has good particle shape, uniform particle size, and less needle-like finished product content.
2. The equipment itself is subject to less abrasion, less consumption, and longer life, so that the equipment can maintain a good operating state for a long time.
3. Strong adaptability, less affected by the moisture content of the material, smooth feeding, no blockage of the discharge.
4. Adopt an elastic adjustment mechanism, the unbreakable materials can be automatically discharged without causing damage to the equipment.

### 技术参数 Technical Parameters

规格型号 Model	给料粒度 Feeding Size(mm)	出料粒度 Size Of Discharge(mm)	生产能力Capacity (t/h)	主轴转速 Main Shaft Speed (r/min)	电机功率 Power Of Motor (kw)	外形尺寸 Dimensions(L*W*H) (mm)	备注 Remarks
PLC-800	≤40	≤0-5 50-90%	10-20	934	30-37	2100*1200*1700	进料粒度、硬度以及易损件的磨损变化而影响出料。 Stones feeding size and hard will affect the discharges.
PLC-1000	≤60	≤0-5 50-90%	20-40	769	45-55	2600*1400*1900	
PLC-1250	≤80	≤0-5 40-80%	40-70	530	75-90	2800*1600*2100	
PLC-1500	≤100	≤0-5 40-80%	70-100	495	132-160	3100*1900*2200	
PLC-1750	≤120	≤0-5 40-80%	130-190	424	160-185	3710*2360*2390	
PLC-2000	≤150	≤0-5 40-80%	160-240	370	185-200	4100*2660*2620	





## 锤式打砂机 Hammer Mill

### 产品简介 Product Introduction

锤式打砂机主要是靠冲击作用来破碎物料的。物料进入锤式粉碎机中，遭到高速回转的锤头的冲击而粉碎，粉碎了的物料，从锤破机锤头处获得动能从高速冲向架体内挡板，筛条，与此同时物料相互撞击，遭到多次破碎，小于筛条之间隙的物料，从间隙中排出，个别较大的物料，在筛条上再次经锤头的冲击，研磨，挤压而破碎，物料被锤破机锤头从间隙中挤出。从而获得所需粒度的产品。

Hammer mill is mainly by impact to break the material. The material enters the hammer mill and is crushed by the impact of a high-speed rotary hammer. The crushed material obtains kinetic energy from the hammer head of the hammer breaker. The material is rushed to the internal baffle of the frame at high speed and the sieve strip. At the same time, the material is smashed into each other. thereby obtaining the desired granularity of the product.



### 产品特点 Product Features

1. 破碎效率高，具有细碎、粗磨功能
2. 锤头为高猛合金材料，耐磨、耐冲击
3. 机体结构密封性好，粉尘污染小
4. 结构简单、安装维修方便、投资成本较低

1. High production and high crushing ratio.
2. Low power consumption, homogeneous particle size.
3. Simple, compact and light mechanical structure.
4. Low investment cost, easy management.

### 适用范围 Scope of application

适用于矿山、水泥、煤炭、冶金、建材、公路、燃化等行业对中等硬度及脆性物料进行细碎。可以破碎各种中硬且磨蚀性弱的物料。其物料的抗压强度不超过100MPa，含水率小于15%

Suitable for mining, cement, coal, metallurgy, building materials, highway, burning and other industries to medium hardness and brittle materials for fine crushing. Can break all kinds of hard and abrasive materials. and the compressive strength of its material is not more than 100 MPa, and the moisture content is less than 15%.

### 技术参数 Technical Parameters

规格型号 Model (mm)	处理量 Capacity (t/h)	给料粒度 Feeding Size (mm)	排料粒度 Discharge Granularity (mm)	锤头数量 Hammers Quantity (pcs)	功率 Motor Power (kw)	柴油机 Diesel(horse)
200*500	1-2	≤50	0.1-12	6	7.5-15	11-21
300*500	1.5-3	≤50	0.1-12	8	11-18.5	15-16
400*500	3-6	≤60	0.1-12	10	15-22	21-30
400*600	4-8	≤80	0.1-12	10	18.5-30	26-41
500*600	5-12	≤100	0.1-12	12	22-30	30-41
600*800	15-50	≤200	0.1-15	32	30-55	41-75
800*1000	20-60	≤300	0.1-15	32	75-90	103-123

## 水泥球磨机 Cement Ball Mill

### 产品简介 Product Introduction

水泥球磨机是一款针对水泥原料及成品进行研磨加工的研磨设备，也适用于冶金、化工、电力等工矿企业粉磨各种矿石及其它可磨性物料。可用于开流粉磨，也适用于与选粉机组成的循环圈流粉磨。水泥磨具有对物料适应性强、能连续生产、破碎比大、易于调速粉磨产品的细度等特点。水泥球磨机既能干法生产也可以湿法生产，也可以粉磨与烘干同时进行作业。



Cement ball mill is a kind of grinding equipment for grinding raw materials and finished products of cement. It is also suitable for grinding various ores and other grindable materials in industrial and mining enterprises such as metallurgy, chemical industry and electric power. It can be used for open-flow pulverization, and also suitable for circulating pulverization with powder separator. Cement ball mill has the characteristics of strong adaptability to materials, continuous production, large crushing ratio, easy to adjust the fineness of grinding products, etc. Cement ball mill can be produced in both dry and wet processes, as well as grinding and drying operations.

### 技术参数 Technical Parameters

规格Model (Diameter * Length) (直径*长度)	转速Speed (r/min)	入料粒度 Feeding Size (mm)	生产能力 Capacity(t/h)	研磨体装载量 Load (t)	主电机Main motor			主减速器Reducing Gear		重量 Weight (t)
					型号Model	功率Power (KW)	转速Speed (r.p.m)	型号Model	速比 Speed Ratio	
Φ2.2*11	20.91	≤25	15-17	50	TR1512-8	570	740	Zd80	5.6	92
Φ2.4*8	20.91		14-18	39.5-42	TRQ1512-8	570	740	Zd80-9	5	76.4
Φ2.4*9	20.91		23-25圈	50	TR1512-8	570	740	Zd80-9	5	91
Φ2.4*10	20.91		16-22	50	TR1512-8	570	740	Zd80-9	5	111
Φ2.4*11	21		开19-24 圈22-28	62-65	YR710-8/1180	710	740	JDX630	5.6	125
Φ2.4*12	21		开18-20 圈21-23	63-65	YR800-8/1180	800	740	MBY710	6.3	127
Φ2.4*13	21		开21-22 圈24-26	66-68	YR800-8/1180	800	740	MBY710	6.3	131
Φ2.6*10	20.6		21-24	64	YR800-8/1180	800	740	JDX710	6.3	140
Φ2.6*13	20.6		28-31	81	YR1000-8/1180	1000	740	JDX800	6.3	158
Φ3.0*9	19.13		40-45	85	YR1000-8/1180	1000	740	MBY800	7.1	148
Φ3.0*11	18.92		44-47	95	YR1250-8/1430	1250	740	JDX900	7.1	177
Φ3.0*12	18.92		48-52	103	YR1250-8/1430	1250	740	JDX900	7.1	182
Φ3.0*13	18.92		39-45	116max	YR1400-8/1430	1400	740	JDX900	7.1	200.7
Φ3.2*11	18.3		45-48	112max	YR1600-8/1430	1400	740	JDX900	7.15	213.6
Φ3.2*13	18.7		50-55	133max	YR1600-8/1430	1600	740	JDX1000	7.15	237
Φ3.4*11	18		45-55	120max	YR1600-8/1430	1600	740	JDX1000		230
Φ3.5*13	17		60-65	156max	YR2000-8-1730	2000	740	TS130-A-F1		257.6
Φ3.8*13	17		65-70	185	YR2500-8/1430	2500	740	DMG22/2500		313
Φ4.0*13	16.3		78-80	191	YRKK900-80	2800	745	JS140-A		348
Φ4.2*11	15.8		100-110	182-190	YR2800-8/17830	2800	740	JS140-A-F1D		350
Φ4.2*13	15.2		110-120	230	YRKK1000-8	3350	740	MFY355-A		380
Φ4.6*14	15		100-115	285	YR1000-8	4200	740	J3160-C		485





## GM系列滚动轴承球磨机 GM Series Rolling Bearing Ball Mill

### 产品简介 Product Introduction

滚动轴承球磨机适用于粉磨各种矿石及其它物料，被广泛用于选矿建材及化工行业，可分为干式和湿式两种磨矿方式。根据排矿方式不同，可分格子型和溢流型两种

Rolling bearing ball mill is suitable for grinding various ores and other materials. It is widely used in mineral processing construction materials and chemical industry. It can be divided into dry and wet grinding methods. According to the different ways of mining, it can be divided into two types: lattice type and overflow type.



### 产品特点 Product Features

1. 选用大直径双列调心滚子轴承，代替原来的瓦式合金滑动轴承，减少了摩擦，降低能耗，磨机启动
2. 保留老式球磨机的端盖结构形式，大口径进出口，处理量大
3. 可选用整体机架，安装精度高，安装简便，周期短

1. Large-diameter double-row spherical roller bearings are used instead of the original tile-type alloy sliding bearings to reduce friction, reduce energy consumption, and start the mill.
2. Retain the structure of the end cover of the old-style ball mill, with a large diameter inlet and outlet, Large processing capacity.
3. Can choose the overall rack, high installation accuracy, easy installation, short cycle.

### 技术参数 Technical Parameters

规格型号 Model	筒体转速 Rotating Speed (r/min)	装球重量 Load Ball Weight (t)	给料粒度 Feeding Size (mm)	产量 Capacity (t/h)	配套电动机 Matching Motors		外形尺寸Dimensions(L*W*H) (mm)	重量 Weight (kg)
					型号Model	功率(kw)		
GM0912	41.6	1.1	25	0.3-0.9	Y180L-8	11	3843×1850×1400	4210
GM0921	41.6	1.8		0.6-1.5	Y180L-6	15	4743×1850×1400	6660
GM0933	41.6	1.8		0.9-2.3	Y225M-6	30	5943×1850×1400	7770
GM1224	35.1	4.0		1.6-4.1	Y280S-8	37	5540×2300×1850	10020
GM1228	35.1	4.6		1.9-4.8	Y280M-8	45	5940×2300×1850	10935
GM1232	35.1	5.3		2.2-5.5	Y280M-8	45	6340×2300×1850	11230
GM1244	35.1	7.3		3.0-7.5	Y135S-8	55	7540×2300×1850	13210
GM1324	30.2	4.5		1.5-3.5	Y280S-8	37	5035×2370×1880	10210
GM1328	30.2	5.2		2.0-4.5	Y280M-8	45	5435×2370×1880	11290
GM1334	30.2	6.5		2.2-5.0	Y280M-8	75	6035×2370×1880	13117
GM1524	30.7	7.0		2.8-6.5	YR280S-8	55	6830×2930×2060	15430
GM1530	30.7	9.0		3.5-8.0	JR117-8	80	7430×2930×2060	16843

### 技术参数 Technical Parameters

规格型号 Model	筒体转速 Rotating Speed (r/min)	装球重量 Load Ball Weight (t)	给料粒度 Feeding Size (mm)	产量 Capacity (t/h)	配套电动机 Matching Motors		外形尺寸Dimensions(L*W*H) (mm)	重量 Weight (kg)
					型号Model	功率(kw)		
GM1533	30.7	10.1	25	4.0-9.0	JR125-8	95	7730×2930×2060	17849
GM1536	30.7	11.0		4.5-10.0	JR125-8	95	8030×2930×2060	18649
GM1542	30.7	12.5		5.0-11.0	JR126-8	110	8630×2930×2060	19330
GM1545	30.7	13.5		5.5-13.5	JR126-8	110	8930×2930×2060	20000
GM1557	30.7	17.0		7.0-15.5	JR17-8	130	10130×2930×2060	23597
GM1563	30.7	19.0		8.0-17.0	JR128-8	155	10730×2930×2060	24390
GM1830	25.04	13.0		3.0-17.0	JF127-8	130	9525×3960×2250	29490
GM1834	25.04	14.0		3.3-20.0	JR128-8	155	9925×3960×2250	30390
GM1836	25.04	15.0		4.0-21.5	JR128-8	155	10125×3960×2250	31600
GM1840	25.04	17.0		4.5-24.0	JR128-8	155	10525×3960×2250	32700
GM1842	25.04	18.0		5.0-25.0	JR136-8	180	10725×3960×2250	33490
GM1844	25.04	19.0		5.2-26.0	JR136-8	180	10925×3960×2250	34210
GM1852	25.04	21.0		6.5-32.5	JR136-8	180	11725×3960×2250	37715
GM1864	25.04	27.0		8.0-40.0	JR137-8	210	12925×3960×2250	42440
GM2122	23.8	15.0		3.0-22.0	JR127-8	130	7775×4060×3400	38793
GM2130	23.8	20.0		4.0-30.0	JR136-8	180	8475×3960×2252	41965
GM2136	23.8	21.0		5.0-37.0	JR1376-8	210	9225×4060×3400	44551
GM2140	23.8	12.0		5.2-39.0	JR138-8	245	9475×4060×3400	46697
GM2145	23.8	25.0		5.6-42.0	JR1410-8	280	9975×4060×3400	49230
GM2436	23	26.6		6.5-82.0	JR1410-8	280	9770×5005×3970	63684
GM2444	23	32.5		8.0-100	JR158-8	380	10570×5005×3970	72284
GM2736	21.7	34.0		15.0-115	JR1512-8	420	10575×5610×4500	88400
GM2745	21.7	40.0		17.5-135	JR1512-8	475	11175×5610×4500	90420
GM3230	18.7	44.0		50.0-90	TDMK500-36	500	11000×7200×5700	124000
GM3245	18.7	65.0		100-145	TDMK630-36	630	13000×72000×5700	145000





## 湿式格子型球磨机 Wet Grid Ball Mill

### 产品简介 Product Introduction

湿式格子型球磨机是一款传统的、靠排矿格子强制排矿的球磨机。如果采用多段磨矿，一般用在一段磨矿。它的筒体使用高耐磨衬板，具有良好的耐磨性，使用寿命长，维护方便。

Wet Grid Ball Mill is a traditional ball mill with forced ore discharging by ore discharging grid. If multi-stage grinding is used, it is generally used in one-stage grinding. Its cylinder body uses high wear-resistant lining, which has good wear resistance, long service life and easy maintenance.

### 产品特点 Product Features

1. 带有顶起装置，便于检修
2. 带慢速传动，便于检修和启动
3. 大小齿轮采用油雾润滑，保证大小齿轮润滑可靠，延长大小齿轮使用寿命，节省润滑油
4. 带有空气离合器，采取柔性启动，减少球磨机启动时对选厂电网造成较大冲击

1. With jacking device, easy to overhaul
2. With slow speed transmission, easy to overhaul and start up
3. The gears are lubricated with oil mist to ensure reliable lubrication of the gears, extend the service life of the gears and save lubricant
4. With air The clutch adopts flexible start to reduce the impact of the ball mill on the power grid of the selection plant

### 湿式格子型球磨机技术参数： Technical Parameter List Of Wet Grid Ball Mill

规格型号 Model	筒体规格 Roller Specifications (mm)		电机型号 Type Of Motor	电机功率 Motor Power (kw)	电机转速 Motor Speed (r/min)	外形尺寸 Dimensions (L*W*H) (mm)	有效容积 Available Capacity (m <sup>3</sup> )	最大装球量 Maximum Ball Loading (t)	重量 Weight (kg)	生产能力 Capacity (t/h)
	直径 Diameter	长度 Length								
MQG0909	900	900	Y225S-8	18.5	720	4750*2213*2050	0.45	0.96	4620	0.22-1.07
MQG0918	900	1800	Y225M-8	22	730	5000*2280*2050	0.9	1.92	5340	0.4-3.4
MQG1212	1200	1200	Y250M-8	30	730	5788*2794*2540	1.14	2.4	11438	0.17-4.1
MQG1224	1200	2400	Y315S-8	55	730	6673*2994*2540	2.28	3.96	13200	0.35-8.2
MQG1515	1500	1500	JR115-8	60	725	6094*3300*2766	2.2	5	13700	1.4-4.5
MQG1530	1500	3000	JR125-8	95	725	7979*3300*2766	4.5	8.4	18690	2.8-9
MQG2122	2100	2200	JR128-8	155	730	7750*4839*3794	6.6	15	45400	5-29
MQG2130	2100	3000	JR137-8	210	735	8970*4839*3794	9	20	50600	6.5-3.6
MQG2430	2400	3000	JR1410-8	280	735	9728*4956*4018	12.1	22.5	67000	9-50
MQG2721	2700	2100	JR1410-8	280	735	9300*5500*4500	10.7	24	63000	6.5-84
MQG2727	2700	2700	JR148-6	310	735	9900*5500*4500	13.8	29	68530	8-100
MQG2736	2700	3600	TDMK400-32/2150	400	187.5	9785*5767*4995	18.4	41	77000	12-145
MQG3230	3200	3000	TDMK500-36	500	167	13700*6760*5100	20.7	46	113500	63-73
MQG3231	3200	3100	TDMK630-36	630	167	12750*6750*5150	21.4	48	114435	65-76
MQG3236	3200	3600	TDMK630-36	630	167	14300*6760*5200	24.8	58	119012	74-86
MQG3245	3200	4500	TDMK800-36	800	167	12700*7200*5700	31	65	127650	95-110
MQG3639	3600	3900	TM1000-36/3600	1000	167	15000*7200*6300	36.2	75	145000	34-187
MQG3645	3600	4500	TDMK1250-40	1250	145	15200*7750*6300	41.8	90	159700	38-210
MQG3650	3600	5000	JM1400-40	1400	145	17600*7750*6300	46.4	96	158000	192
MQG3660	3600	6000	TDMK1600-40	1600	140	17000*8800*6500	55.7	120	18900	230

## 湿式溢流型球磨机 Wet Overflow Ball Mill

### 产品简介 Product Introduction

湿式溢流型球磨机是一款结构简单、靠矿浆自流排矿的新型球磨机设备，常用于研磨细度较细的矿石。如果采用多段磨矿，一般用在二段、三段磨矿。它的筒体使用高耐磨衬板，具有良好的耐磨性，使用寿命长，维护方便。

Wet overflow ball mill is a new type of ball mill equipment with simple structure and self-flowing ore discharge by ore slurry. It is often used to grind finer ore. If multi-stage grinding is used, it is generally used in the second and third stage grinding. Its cylinder body uses high wear-resistant lining, which has good wear resistance, long service life and easy maintenance.

### 产品特点 Product Features

1. 带有顶起装置，便于检修
2. 带慢速传动，便于检修和启动
3. 大小齿轮采用油雾润滑，保证大小齿轮润滑可靠，延长大小齿轮使用寿命，节省润滑油
4. 带有空气离合器，采取柔性启动，减少球磨机启动时对选厂电网造成较大冲击

1. With jacking device, easy to overhaul.
2. With slow speed transmission, easy to overhaul and start up.
3. The gears are lubricated with oil mist to ensure the reliable lubrication of the gears, extend the service life of the gears, save oil.
4. With air The clutch adopts flexible start to reduce the impact of the ball mill on the power grid of the selection plant.

### 湿式溢流型球磨机技术参数： Technical Parameter List Of Wet Overflow Wet Ball Mill

规格型号 Model	筒体规格 Roller Specifications (mm)		电机型号 Type Of Motor	电机功率 Motor Power (kw)	电机转速 Motor Speed (r/min)	外形尺寸 Dimensions (L*W*H) (mm)	有效容积 Effective Volume (m <sup>3</sup> )	最大装球量 Maximum Ball Loading (t)	重量 Weight (kg)	生产能力 Capacity (t/h)
	直径 Diameter	长度 Length								
MQY1212	1200	1200	Y250M-8	30	730	5023*2794*2540	1.14	2.4	11473	0.2-4.1
MQY1224	1200	2400	YR280S-8	55	723	6112*2794*2540	2.28	3.8	12308	0.35-8.2
MQY1515	1500	1500	JR115-8	60	723	5766*2945*2600	2.2	6.4	15424	1.4-5
MQY1530	1500	3000	JR125-8	95	725	7979*2945*2600	4.5	10	18690	2.5-8
MQY2122	2100	2200	JR128-8	155	730	8070*4840*3795	6.6	14	47600	4.5-26
MQY2130	2100	3000	JR137-8	210	735	8870*4840*3795	9	20	49780	4-30
MQY2136	2100	3600	JR137-8	210	735	9300*4840*3795	10.8	22	52010	4.8-36
MQY2145	2100	4500	JR148-8	310	740	11029*4737*3300	13.5	23.8	58305	8-35
MQY2136	2100	3600	JR137-8	210	735	9300*4840*3795	10.8	22	52010	4.8-36
MQY2145	2100	4500	JR148-8	310	740	11029*4737*3300	13.5	23.8	58305	8-35
MQY2430	2400	3000	JR1410-8	280	740	9710*4778*4120	12.1	23	65880	6.2-77.6
MQY2721	2700	2100	JR1410-8	280	740	9400*5600*4700	10.7	24	63900	7-78
MQY2736	2700	3600	TDMK400-32	400	187.5	11400*5700*4500	18.4	38	70000	10.5-130
MQY2740	2700	4000	TDMK400-32	400	187.5	11850*5667*4496	20.4	40	78800	12-145
MQY3231	3200	3100	TDMK630-36	630	167	12750*6760*5150	21.4	45	107660	74-86
MQY3254	3200	5400	TM1000-36/2600	1000	167	15600*6760*5200	37.2	73	121000	112-135
MQY3645	3600	4500	TM1000-36/2600	1000	167	15000*7200*6326	41.8	76	135000	170
MQY3650	3600	5000	TM11250-40/3250	1250	150	17157*7755*6326	46.4	86	145000	40-178
MQY3660	3600	6000	TM11250-40/3250	1250	150	19000*7755*6326	55.7	102	154000	186





## 棒磨机 Rod Mill

### 产品简介 Product Introduction

棒磨机是一种筒体内所装载研磨体为钢棒的磨机。棒磨机一般是采用湿式溢流型可作为一级开路磨矿使用，棒磨机广泛用于金属和非金属矿山及水利、建材部门粉磨各种矿石或岩石。当要求产品粒度80%小于2.0%至0.5毫米时，一般采用棒磨机。棒磨机的产品粒度一般最大不超过4.7毫米，最小不小于0.4毫米。棒磨机的给矿粒度80%为小于4至20毫米，给矿粒度最大也可达50毫米。

Rod mill is a grinding mill whose grinding medium is steel rod. Rod mills generally use a wet-overflow type, which can be used as a first-level open-end grinding. Rod mills are widely used in metal and non-metallic mines and water conservancy and building materials departments to grind various mineral ores or rocks. When the product particle size 80% is required to be 0.5 to 2 mm, a rod mill is generally used. The product size of the rod mill is generally no more than 4.7 mm, and no less than 0.4 mm. The 80% ore feeding particle size of the rod mill is less than 4 to 20 mm, and the maximum ore feeding particle size can also reach 50 mm.



### 产品特点 Product Features

1. 采用先进的可控进料棒磨机技术，结合实际用户的研磨物料配用合适的研磨介质，一改传统球磨机的面接触为线接触，使棒磨机的出料粒度更为均匀、产量更高，适用于不同硬度（莫氏硬度5.5~12）的矿石。
2. 出料粒度可以调节，内置粒度控制装置通过简单的调整可以改变产品出料粒度，出料口可以增加筛分装置，防止过度研磨。

1. Adopt advanced controllable inlet and outlet rod mill technology, combined with the actual user's grinding material and use appropriate grinding media. The surface contact of the traditional ball mill is changed to linear contact, which makes the rod mill's output particle size more uniform and capacity higher, it is suitable for ores with different hardness (Mohs hardness 5.5-12).
2. The discharge particle size can be adjusted. The built-in particle size control device can change the product discharge particle size through simple adjustment. The discharge port can be increased by a screening device to prevent excessive grinding.

### 技术参数 Technical Parameters

规格型号 Model	筒体规格 Cylinder Specifications (mm)		筒体转速 Rotating Speed (r/min)	装棒重量 Rod Weight (t)	给料粒度 Feeding Size (mm)	排料粒度 Discharge Size (mm)	产量 Capacity(t/h)	电机功率 Motor power (kw)	外形尺寸 Dimensions(L*W*H) (mm)	重量 Weight (kg)
	直径 Diameter	长度 Length								
MBS0918	900	1800	29.0-31.3	2.3	<25	0.16-5	1.6-6	22	5900*2365*2015	4200
MBS0924	900	2400	29.0-35.4	3.1			2.9-10	30	5250*2480*2127	5300
MBS1224	1200	2400	27.0-34.0	6.5			5.0-13	37	5829*2867*2540	11800
MBS1530	1500	3000	26.5-29.5	11.5			6.0-25	90	7635*3329*2749	18170
MBS1830	1800	3000	21.6-22.8	17.5			4.8-28	155	8007*3873*3023	35000
MBS2130	2100	3000	19.0-21.0	23.5			12.6-30	210	9000*2800*3800	43000
MBS2136	2100	3600	19.0-21.0	23.2			15.1-45	245	9600*2800*3800	48000
MBS2736	2700	3600	17.2-18.5	47			25.0-75	400	10870*6100*4950	71500
MBS2740	2700	4000	17.2-18.5	51			27.7-90	430	11500*6100*4950	73600

## 碾金机 Wet Pan Mill

### 产品简介 Product Introduction

碾金机也称湿碾机，是一种多功能的矿石研磨设备，不仅用于研磨矿物，还用于金汞合金。由于具有出色的湿磨性能，投资少且产量高，它是小容量球磨机的最佳替代品。碾金机被广泛应用于各种金属矿物，非金属矿物，稀有金属和其他材料的研磨和选矿。如金，银，铅，锌，钽铁矿，铜，锑，钨，锡等

Wet pan mill also called round mill, it is multifunctional ore grinding equipment not only for grinding the minerals but also for gold amalgam. It is a best replacement for small capacity ball mill, owing to the excellent performance for wet grinding, small investment and high output. It is widely applied to the grinding and beneficiation of all kinds of metal minerals, non-metal minerals, rare metal and other materials. Such as gold, silver, lead, zinc, tantalum, copper, antimony, tungsten, tin and so on.



### 产品特点 Product Features

1. 设备构造简单，操作方便，不受场地影响，接电即可生产
2. 碾碾、碾底是用纯白铁加入特种耐磨材料加工制成，经久耐用
3. 设备投资小，产量高，生产灵活，可选用单台研磨，也可采用多台组合研磨
4. 使用范围广，球磨机可研磨的物料都可以使用碾金机碾磨

1. Simple structure, easy to operate, it can be produced after power-on.
2. Roller and grinding base are made of special wear-resistant materials, which are durable.
3. Small investment, the output is high, and the production is flexible. One set or multiple group-type can be used for grinding materials.
4. Wide range of use, all materials that can be milled by the ball mill also can be milled with the wet pan mill.

### 技术参数 Technical Parameters

规格型号 Model	给料粒度 Feeding Size (mm)	出料粒度 Output Size (mm)	处理能力 Capacity (t/h)	转速 Speed (r/min)	重量 Weight (kg)	电机功率 Motor Power (kw)	规格 Specification (mm)
900	<15	0.6-0.07	0.3	17-19	3000	5.5	900*150*60*200
1000	<20		0.5	16-18	4500	5.5	1000*220*80*250
1100	<20		0.6-0.8	16-18	5000	7.5	1100*200*80*250
1200B	<20		0.8-1.2	16-18	5500	7.5	1200*220*80*250
1200A	<20		1-1.3	21-23	5500	7.5	1200*220*80*270
1300	<20		1.5	16-18	7500	15	1300*250*150*350
1400	<20		1.5-2	16-18	8500	18.5	1400*250*150*350
1500B	<30		2.5-3	20-22	12300	22	1500*350*150*460
1500A	<30		3-4	20-22	13300	22	1500*350*200*460
1600	<30		4-5	20-22	14500	30	1600*400*200*500





## 轮斗洗砂机 Wheel Sand Washing Machine

### 产品简介 Product Introduction

XS系列洗砂机采用国内外先进技术，结合国内砂石行业实际情况研制生产的配合制砂机使用的高效轮斗式洗砂设备。它具有洗净度高，结构合理，处理量大，功率消耗小，砂子流失少，故障率低等特点，是国内洗砂设备升级换代的最佳选择。

XS series sand washing machine adopts advanced technology at home and abroad, combined with the actual situation of the domestic sand and stone industry. It has the characteristics of high cleaning degree, reasonable structure, large processing capacity, small power consumption, less sand loss, and low failure rate. It is the best choice for upgrading domestic sand washing equipment.



### 产品特点 Product Features

1. 无污染，洗净度高
2. 结构合理、维修便利、处理量大、功率消耗小
3. 该机结构简单，叶轮传动轴承装置与水和受水物料隔离大大避免了轴承因浸水、砂和污染物导致损坏的现象发生

1. No pollution, high cleanliness.
2. Reasonable structure, convenient maintenance, large handling capacity, small power consumption.
3. The structure of this machine is simple, and the impeller drive bearing device is isolated from water and water material, which greatly avoids the damage caused by flooding, sand and pollutants.

### 技术参数 Technical Parameters

规格型号 Model	斗排数量 Quantity Of Bucket Row	处理量 Capacity (t/h)	反砂量 Sand Return (t/h)	功率 Power (kw)	机重 Machine Weight (kg)
GX2000	单	10-30	3-8	4	1200
GX2000	双	20-60	6-16	4	1900
GX2600	单	20-65	6-16	4	2200
GX2600	双	38-100	9-30	5.5	3800
GX2800	单	45-200	9-35	5.5	2600
GX2800	双	90-200	20-55	7.5	4200
GX3200	单	110-210	35-60	7.5	3000
GX3200	双	240-300	50-80	11	5600

## 圆筒洗矿机 Rotary Trommel Washing Machine

### 产品简介 Product Introduction

圆筒洗矿机是一种具有清洗和筛选功能的高效矿物清洗设备。当圆筒洗矿机运行时，在该设备中加入清水，通过圆筒旋转搅拌清除原矿中溶于水的泥砂等杂质，而使矿石达到工艺要求。圆筒洗矿机适用于清洗80mm以下的矿石，以清洗锰矿石为例，锰矿石含泥量80%，经洗矿机清洗后含泥量为15%以下，使矿石达到工艺要求和经济指标。

Rotary trommel washing machine is a high efficiency mineral washing equipment with cleaning and screening functions. When the rotary trommel washing machine is running, add fresh water to the equipment, and it will remove impurities such as mud and sand dissolved in the water in the original ore by rotating and stirring the cylinder, so that the minerals meet the process requirements. The rotary trommel washing machine is suitable for washing minerals under 80mm. Taking manganese ore as an example, the manganese ore has a mud content of 80%, and the mud content after washing by the ore washing machine is less than 15%, so that the ore meets the process requirements and economic indicators.



### 产品特点 Product Features

1. 可从黏土中分离砾石、沙子
2. 处理能力大，洗矿能力强
3. 具有很好的清洗和筛分功能
4. 最大进料粒度可达230mm
5. 长形的洗矿筒体使得物料在内的逗留时间长，充分且有力地将物料完全分散

1. Designed to break up alluvial gravels, clays and sand.
2. High capacity and high scrubbing power.
3. It has a good function of washing and screening.
4. Can accept material up to 230mm.
5. The long drum of the scrubber retains material for longer, more vigorous washing for complete separation.

### 技术参数 Technical Parameters

规格型号 Model	筛网尺寸 Screen Size (mm)	进料粒度 Feeding Size (mm)	处理能力 Capacity (t/h)	转速 Rotation Speed (r/min)	电机功率 Power (kw)	重量 Weight (kg)
GTS1030	5-25	0-100	30-50	25	15	4800
GTS1230	5-25	0-150	50-70	23	18.5	5800
GTS1545	5-50	0-170	70-120	18	30	6900
GTS1560		0-170	80-130	18	37	8300
GTS1845		0-200	90-130	16	45	11800
GTS1860		0-200	100-140	16	45	12800
GTS2060		0-230	120-160	16	55	14800
GTS2265		0-230	160-180	16	55	16500





## 螺旋分级机 Spiral Classifier

### 产品简介 Product Introduction

螺旋分级机是借助固体颗粒的比重不同，因而在液体中沉淀的速度不同的原理，进行机械分级的一种选矿设备。它主要用于磨矿回路中的预先分级和检查分级以及洗矿、脱泥等作业中。其主要优点是构造简单，工作可靠，操作方便，易于直径小于3.6m的磨矿机构构成闭路。

螺旋分级机按螺旋轴数目分为单螺旋和双螺旋分级机，按溢流堰高度可分为高堰式、低堰式和沉没式。高堰式分级机一般用于粗粒分级，其分级溢流粒度上限大于0.15mm。沉没式分级机一般用于细粒分级，其分级溢流粒度上限小于0.15mm。低堰式通常不用做分级，主要用于冲洗矿砂进行脱泥。

Spiral classifier is a kind of mineral processing equipment that performs mechanical classification by virtue of the principle that the specific gravity of the solid particles is different, and therefore the speed of precipitation in the liquid is different. It is mainly used for pre-classification and inspection classification in the grinding circuit, ore washing, desilting and other operations. Its main advantages are simple structure, reliable work, convenient operation, and easy to form a closed circuit with a grinding mechanism with a diameter of less than 3.6m.

Spiral classifier is divided into single spiral and double spiral classifiers according to the number of spiral shafts, and can be divided into high weir type, low weir type and submerged type according to the height of the overflow weir. High weir spiral classifier is generally used for coarse particle classification, and its upper limit of classification overflow particle size is greater than 0.15mm. The submerged spiral classifier is generally used for fine particle classification, and the upper limit of the classification overflow particle size is less than 0.15mm. The low weir type usually does not need to be graded, and is mainly used for flushing ore for desilting.

### 产品特点 Product Features

1. 该分级机采用密封浸没式轴承
2. 转载动力强劲的独立式提升设备
3. 螺栓安装式耐磨衬板，可延长磨耗寿命
4. 长窄型槽体，可使搅动效果佳，延长物料在水中悬浮时间
5. 足够大的沉降区域延长物料悬浮时间，更有利于物料分级
6. 合适的浆池深度、面积和螺旋构造组合实现对分级力度佳的控制
7. 该分级机可根据实际需要选择单螺旋和双螺旋，同时槽体设计选择范围广

1. The classifier adopts sealed immersion bearing.
2. Transfer power of the independent lifting equipment.
3. Bolt mounted wear-resistant liner can prolong wear life.
4. Long and narrow tank can make the agitation effect better and prolong the material suspension time in water.
5. Large enough settlement area to prolong the material suspension time is more conducive to material grading.
6. The appropriate slurry pool depth, area and spiral structure combination to achieve the control of good grading strength.
7. The classifier can select single screw and double screw according to the actual needs, and the slot design selection range is wide.



### 高堰式螺旋分级机技术参数 Technical parameter list of high weir spiral classifier

类型	型号Model	螺旋直径 Screw Diameter (mm)	螺旋转速 Speed (r/min)	水槽 (Water Chute)		倾斜角 Angle Of Roll (°)	生产能力 Capacity (m³/d)		功率 Power(kw)		重量 Weight (kg)
				长 Length (mm)	宽 Width (mm)		溢流量 Excess(m³)	返砂量 Sand Return(m³)	传动电机 Transmission Motor	提升电机 Lift Motor	
高堰式单螺旋	FLG-5	500	8.5-11.5	4500	555	14° -18° 30'	32	143-261	1.1	0	1600
	FLG-7	750	4.5-9.9	5500	830		65	256-564	3	0	2900
	FLG-10	1000	3.5-7.6	6500	1112		85	473-1026	5.5	0	4400
	FLG-12	1200	6	6500	1372		155	1170-1600	5.5	1.5	8800
	FLG-15	1500	2.5-6	8265	1664		235	1140-2740	7.5	2.2	11680
	FLG-20	2000	3.6-5.5	8400	2200		400	3890-5940	11/15	3	20450
	FLG-24	2400	3.64	9130	2600		580	6800	15	3	25650
高堰式双螺旋	FLG-30	3000	3.2	12500	3200	890	11650	22	4	37000	
	2FLG-12	1200	6	6500	2600	310	2340-3200	5.5×2	1.5×2	15840	
	2FLG-15	1500	2.5-6	8250	3200	470	2280-5480	7.2×2	2.2×2	22100	
	2FLG-20	2000	3.6-5.5	8400	4280	800	7780-11880	11×2 15×2	3×2	36400	
	2FLG-24	2400	3.67	9130	5100	1160	13600	30	3×2	45874	
	2FLG-30	3000	3.2	12500	6300	1785	23300	45	4×2	73030	

### 沉没式螺旋分级机技术参数 Technical parameter list of submerged spiral classifier

类型	型号Model	螺旋直径 Screw Diameter (mm)	螺旋转速 Speed (r/min)	水槽 (Water Chute)		倾斜角 Angle Of Roll (°)	生产能力 Capacity (m³/d)		功率 Power(kw)		重量 Weight (kg)
				长 Length (mm)	宽 Width (mm)		溢流量 Excess(m³)	返砂量 Sand Return(m³)	传动电机 Transmission Motor	提升电机 Lift Motor	
沉没式单螺旋	FLG-10	1000	6-7.4	8400	1112	14° -18° 30'	75	473-1026	5.5	--	6000
	FLG-12	1200	5-7	8400	1372		120	1170-1630	7.5	2.2	11020
	FLG-15	1500	2.5-6	10500	1664		185	1140-2740	7.5	2.2	15340
	FLG-20	2000	3.6-5.5	12900	2220		320	3890-5940	11/15	3	29060
	FLG-24	2400	3.64	11130	2600		455	6800	18.5	4	37267
	FLG-30	3000	3.2	14300	3200		705	11650	30	4	43500
沉没式双螺旋	2FLG-12	1200	6	8400	3200	240	1770-2800	7.5×2	1.5×2	19610	
	2FLG-15	1500	2.5-6	10500	3200	370	2280-5480	7.5×2	2.2×2	27450	
	2FLG-20	2000	3.6-5.5	12900	4280	640	7780-11880	11×2 15×2	3×2	36400	
	2FLG-24	2400	3.67	11130	5100	910	13700	37	3×2	65283	
2FLG-30	3000	3.2	14300	6300	1410	23300	45	4×2	84870		





## FX型水力旋流器 FX Hydrocyclone

### 产品简介 Product Introduction

水力旋流器是一种利用离心力分离两相流体的高效分级设备，广泛用于黑色有色金属矿山、非金属矿山、化工矿山等物料的分级、浓缩、脱水、脱泥、分选和洗涤等作业。矿浆在压力作用下经给料口沿切线或者渐开线方向（取决于进料体采用的入料形式）进入旋流器本体，在离心力场作用下，大颗粒随外旋流向下运动，从下部沉砂口得到粒度粗的沉砂产物，细颗粒随内旋流向上运动，从上部溢流管得到粒度细的溢流产物。

Hydrocyclone is a high efficiency classification equipment that uses centrifugal force to separate two-phase fluids. It is widely used in the classification, concentration, dehydration, desilting, separation and washing of materials such as ferrous, non-ferrous metal mines, non-metal mines, chemical mines, etc. operation. Under the action of pressure, the slurry enters the cyclone body through the feed port along the tangent or involute direction (depending on the feed form used by the feed body). Under the action of the centrifugal force field, the large particles move downward with the external swirl flow, from A coarse grit product is obtained at the lower grit opening. Fine particles move upward with the internal swirling flow, and a fine-grained overflow product is obtained from the upper overflow pipe.



### 产品特点 Product Features

1. 产品用聚氨酯弹性体材料制作内衬，具有耐磨性强，重量轻，不为酸、碱、盐溶液腐蚀，不易老化，不发生锈蚀等优点
2. 本产品适用于含固体泥浆（包括低黏度溶液）的颗粒分级、浓缩、脱泥及水质净化作业，可用于选矿厂的闭路磨矿分级，尾砂输送或用于井下填充筑坝时的尾矿浓缩，非金属矿及化工原料的粉体制备，油田钻井泥浆的除净化，环保废水处理等作业
3. 给料口的形状采用螺旋线进料或渐开线进料，因此进料过程中能获得预分离作用，提高分离效率
4. 合理的流道结构、光滑的内表面，尽可能少的泄露点等，使得水力旋流器净化效果好，安装简单，维修方便

1. Products made of polyurethane elastomer lining, with strong wear resistance, light weight, not acid, alkali, salt solution corrosion, not easy to aging, no corrosion and other advantages.
2. This product is suitable for particle classification, concentration, desliming and water purification operations with solid mud (including low viscosity solution). It can be used for closed-circuit grinding classification of concentrator, tailings concentration when tailings are transported or used for underground dam filling, powder preparation of non-metallic ore and chemical raw materials, removal and purification of oil field drilling mud, environmental protection wastewater treatment, etc.
3. The shape of feed port is helical or involute, the pre-separation effect can be obtained and the separation efficiency can be improved.
4. Reasonable flow channel structure, smooth inner surface, as few leakage points as possible, so that the hydrocyclone purification effect, simple installation, easy maintenance.

### 技术参数 Technical Parameters

规格型号 Model	内径 Inner Diameter (mm)	最大给料粒度 Max. Feeding Size (mm)	给料压力 Feed Prissure (Mpa)	处理能力 Capacity (m <sup>3</sup> /h)	外形尺寸Dimensions(L*W*H) (mm)	重量Weight (kg)	分离粒度 Separation Of Particle Size (um)
FX-50	50	0.3	0.1-0.5	1.5-3	160*152*325	7	10-74
					160*152*550	2	5-30
FX-75	75	0.6	0.1-0.5	2-5	240*230*459	4	20-74
					240*230*700	7	
FX-100	100	1	0.05-0.4	5-12	257*210*525	8	20-100
					257*210*575	5	10-100
					257*210*829	6	10-74
FX-125	125	1	0.05-0.4	8-15	210*185*617	10	20-100
					250*240*973	12	20-74
FX-150	150	1.5	0.05-0.4	11-20	252*270*682	22	30-74
					290*349*899	20	30-74
					280*295*1267	60	20-74
FX-200	200	2	0.05-0.4	25-40	320*307*1025	36	40-100
					320*307*1114	64	30-100
FX-250	250	3	0.05-0.4	40-65	548*534*1178	63	40-100
					548*390*1057	120	30-100
					548*415*1380	123	40-100
FX-300	300	5	0.03-0.4	45-90	563*410*1305	88	50-150
					563*410*1490	169	40-100
FX-350	350	6	0.03-0.4	60-105	530*413*1411	135	50-150
					530*413*1411	155	50-150
					530*413*1674	230	50-120
FX-500	500	10	0.03-0.4	140-220	951*718*1825	416	74-220
					850*623*1825	490	74-220
					951*718*2280	556	74-150
FX-660	660	16	0.03-0.4	250-360	1212*850*2720	950	74-220





## 脱水筛 Dewatering Screen

### 产品简介 Product Introduction

脱水筛，主要作用是脱水、脱泥、脱介，可用于砂石料厂水洗砂选煤厂煤泥回收，矿厂尾矿干排等，因此也叫砂石脱水筛、矿用脱水筛、泥脱水筛、尾矿脱水筛等。尾矿脱水也叫尾矿干排，除了具有普通脱水筛的各种优良性能及作用外，尾矿干排筛多配合浓密机进行尾矿干排，是当下最好的脱水筛及尾矿干排设备。虽然同属于脱水设备，但是作用于不同物料时，脱水筛的结构还是有所不同的，比如水洗砂生产线上的砂石脱水筛和选矿厂常用的尾矿脱水筛就是不同的设备。

Dewatering screen is mainly used for dehydration and desilting. Used for sand stone plants, coal wash plant, sand wash plant and tailings drying, so it is also called sand and stone dewatering screen, mine dewatering screen, slime dewatering screen, tailings dewatering screen and so on. Tailings dewatering is also called tailing dry discharge. In addition to the excellent performance and function of ordinary dewatering screen, tailing dry discharge screen is the best dewatering screen and tailing dry discharge equipment. Although it belongs to the same dehydration equipment, the structure of the dehydration screen is different when it acts on different materials, such as the sand and stone dehydration screen on the washing sand production line and the tail used in the concentrator. Mine water screen is different equipment.

### 产品特点 Product Features

1. 噪音小、维修方便
2. 结构合理、坚固耐用
3. 筛分处理能力强，筛分效率高
4. 重量轻，拆装方便，便于维护、无突发性断簧

1. Low noise, easy maintenance.
2. Reasonable structure, strong and durable.
3. High screening capacity and high screening efficiency.
4. Light weight, easy to disassemble, easy to maintain, no sudden spring break.



### 技术参数 Technical Parameters

规格型号 Model	筛网面积 Screen Area (m <sup>2</sup> )	功率 Power (kw)	处理能力Capacity (m <sup>3</sup> /h)	进料粒度 Feeding Size (mm)	重量 Weight (t)	外形尺寸Dimensions (L*W*H) (mm)
TS0820	1.5	0.75*2	5-10	≤10	0.8	2300*1000*750
TS0920	1.8	1.1*2	10-20		1.2	2300*1200*750
TS1020	2	1.5*2	20-30		1.6	2300*1300*750
TS1225	3	2.2*2	50-80		2.1	2800*1500*800
TS1530	4.5	3*2	100-120		3.2	3300*1800*800
TS1848	8.6	5.5*2	120-200		4.1	3550*2200*1300
TS2160	12.6	7.5*2	150-250		5.3	7100*2600*2100
TS2460	14.4	11*2	200-300		8.5	7100*2900*2100
TS3070	21	15.2	250-500		12.5	7900*4500*4700

## 滚筒筛 Trommel Screen

### 产品简介 Product Introduction

滚筒筛是分选技术中应用非常广泛的一种机械，是通过对颗粒粒径大小来控制矿物分选的，分选精度高。滚筒筛筒体一般分几段，可视具体情况而定，筛孔由小到大排列，每一段上的筛孔孔径相同。主要有电机、减速机、滚筒装置、机架、密封盖、进出料口组成。

Trommel screen is a kind of machine which is widely used in sorting technology. It is controlled by particle size and has high sorting precision. The cylinder of the drum screen is generally divided into several sections, depending on the specific situation, the sieve holes are arranged from small to large, and the aperture of the sieve holes on each section is the same, mainly composed of motor, reducer, drum device, frame, seal cover, feeding port and discharge port.



### 产品特点 Product Features

1. 筛孔不易堵塞
2. 运行平稳，噪声较低
3. 结构简单，维修方便
4. 筛分筒可封闭，易于密闭收尘
5. 采用特质筛网，筛分效率高，使用寿命长

1. The sieve hole is not easily blocked.
2. Running smoothly, low noise.
3. Simple structure and easy maintenance.
4. Screening cylinder can be closed, easy to close dust collection.
5. Using special screen, high screening efficiency and long service life.

### 技术参数 Technical Parameters

规格型号 Model	处理能力 Capacity (t/h)	功率 Power (kw)	筛筒直径 Diameter Of Sieve Cartridge (mm)	筛筒长度 Length Of Sieve Cartridge (mm)	筛下粒度 Size Of Sieve (mm)	重量Weight (kg)	外形尺寸Dimensions(L*W*H) (mm)
GT1015	50	4	1000	1500	3-10	2200	3000*1400*2145
GT1020	100	5.5	1000	2000		2800	3460*1400*2145
GT1225	160	7.5	1200	2500		4200	4146*1600*2680
GT1530	250	11	1500	3000		5100	4460*1900*2820
GT1545	350	15	1500	4500		6000	5960*1900*3080
GT1848	450	22	1800	4800		7500	6500*2300*4000
GT2055	600	30	2000	5500		8600	7500*2500*4000



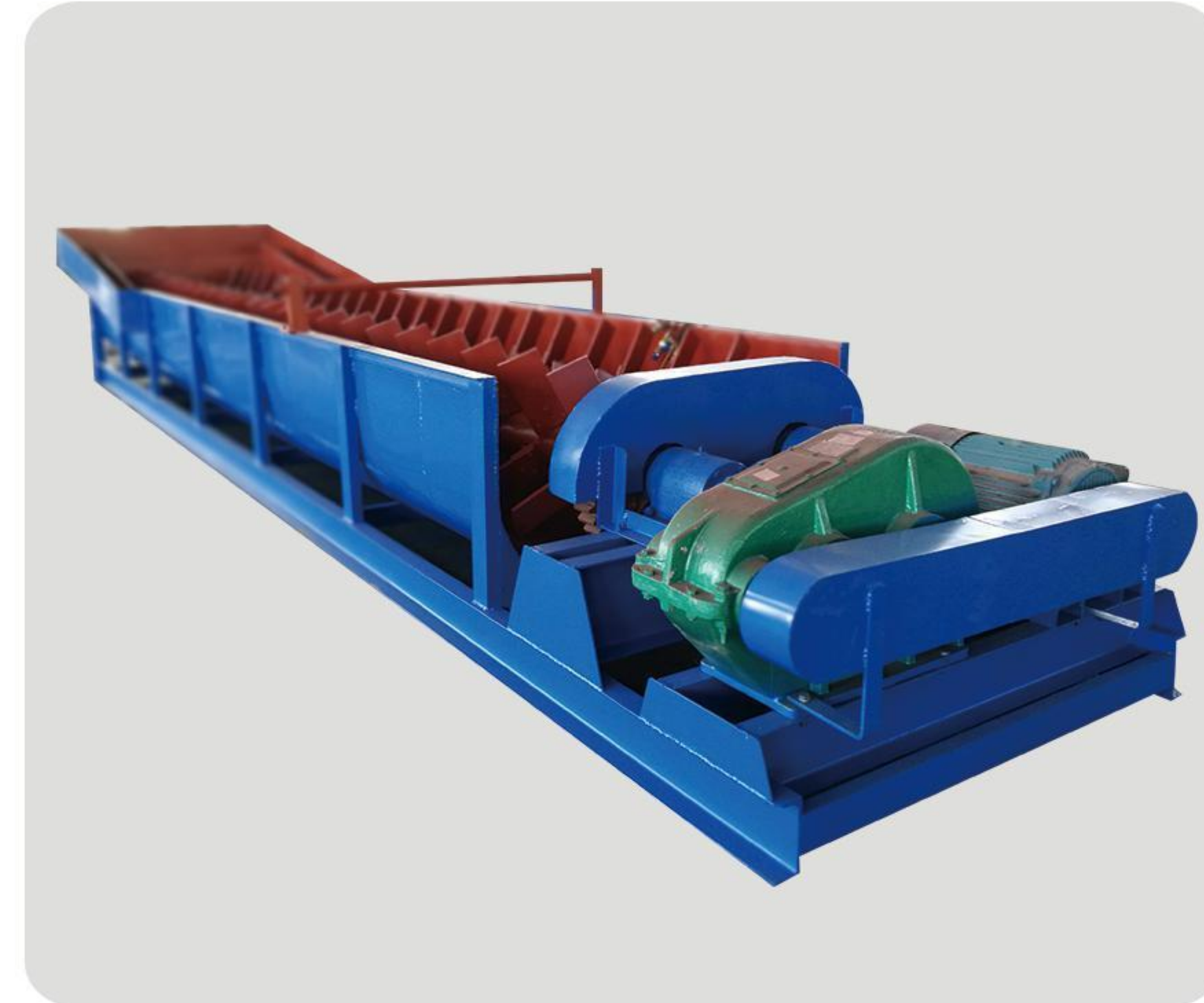


## 双螺旋洗矿机 Double Spiral Log Washer

### 产品简介 Product Introduction

双螺旋洗矿机是一种用于选矿工艺中含泥矿石清洗脱泥的洗矿设备，适用于锰矿、铁矿、石灰石、钨矿、锡矿、硅砂、石英石、高岭土等矿物的洗选作业。根据矿石含泥量、粒度及洗选难易程度，可特别定制不同用途的双螺旋洗矿机，以达到客户的要求。

Double spiral log washer is a kind of mineral washing equipment used for washing and desilting muddy ore in mineral processing plant, it is suitable for washing manganese ore, iron ore, limestone, tungsten ore, tin ore, silica sand, quartz stone, kaolin and other minerals operation. According to the mud content, particle size and the degree of difficulty in washing, the double spiral log washer can be specially customized to meet different customer requirements.



### 产品特点 Product Features

1. 螺旋洗砂机结构简单，运行稳定
2. 轴承和水、物料分开，避免机器过早因污染生锈而引发的损坏现象
3. 所洗物料流失少、选洗效率高，可完全满足高等级用料的要求
4. 使用寿命比较长，几乎没有易损件

1. The spiral sand washing machine has simple structure and stable operation.
2. The bearing is separated from water and material to avoid the damage caused by pollution and rust.
3. Less loss of washing materials, high cleaning efficiency, can fully meet the requirements of high-grade materials.
4. Long service life, few breakable parts.

### 技术参数 Technical Parameters

规格型号 Model	螺旋大小 Spiral Size (mm)	旋转速度 Rotating Speed(r/min)	给矿粒度 Granulation Of Ore (mm)	产量 Capacity (t/h)	功率 Power(kw)	重量 Weight (t)
2RXL320	φ320×3200	28	≤30	10	4	0.9
2RXL400	φ400×4600	23	≤30	20	5.5	1.9
2RXL540	φ540×4600	23	≤30	25	7.5	3.9
2RXL750	φ750×7600	22.7	≤70	50	11	7.5
2RXL800	φ800×7600	22	≤70	70	15	9.5
2RXL914	φ914×7600	21	≤70	100	22	12.9

## RJ单叶轮搅拌槽 RJ Single Impeller Agitation Tank

### 产品简介 Product Introduction

该产品是目前最为常用的普通型搅拌槽，叶轮位于循环筒的下口部位将矿浆、药剂加入循环筒内进行搅拌。本公司通过实验，设计的新型叶轮不同于原来的 I、II 型搅拌槽，搅拌效率高

The product is the most commonly used mixing tank, impeller is located in the lower part of the circulating cylinder, adding slurry, medicament into the circulating cylinder for stirring. The new impeller designed by our company is different from the original I and II stirred tank, and the stirring efficiency is high.



### 选用说明 Selection Instructions

订货时除注明型号数量外，必须提供浮选流程及以下内容：

1. 可根据用户需要制作橡胶叶轮、尼龙叶轮等产品，订货时需特别注明
2. 可根据用户要求设置电机、给矿口、排矿口的相对位置，一般在现场安装时组装相关部件
3. RJ搅拌槽有锥底和平底两种型式，锥底型式需特别注明

When place the order, pls kindly provide the flotation flowchart and the following information:

1. We can make rubber impeller, and nylon impeller, etc as required by the customer. Please specify the type while placing your order.
2. We can make the position of the motor, feeding port and discharge port as the customers' request. and some parts will be assembled on site.
3. There are 2 types of RJ Agitating Tank: cone bottom tank and flat bottom tank. Pls note it if a cone bottom tank is demanded.

### 技术参数 Technical Parameters

规格型号 Model	槽内部尺寸 Tank Internal Dimensions (mm)		有效容积 Effective Volume (m <sup>3</sup> )	搅拌器Stirrer		电动机Electric Motor		外形尺寸Dimensions (mm)		重量Weight (kg)
	直径Dia	高度Heigh		直径Dia (mm)	转速Speed (r/min)	型号Model	功率Power (kw)	长度Length	高度Height	
RJ05	500	500	0.078	150	690	Y80M2-4	0.75	720	874	110
RJ07	750	750	0.26	240	530	Y90L-4	1.5	939	1241	228
RJ10	1000	1000	0.58	240	530	Y90L-4	1.5	1080	1665	350
RJ12	1200	1200	1.14	400	320	Y132S-6	3	1540	1858	765
RJ15	1500	1500	2.2	400	320	Y132S-6	3	1690	2171	1360
RJ20	2000	2000	5.5	550	230	Y132M2-6	5.5	2381	3046	1655
RJ25	2500	2500	11	625	230	Y160M-6	7.5	2881	3546	2766
RJ30	3000	3000	19.1	900	210	Y225S-8	18.5	3266	4325	4296





## SJ双叶轮浸出槽 SJ Double Impeller Leaching Tank

### 产品简介 Product Introduction

双叶轮浸出槽是一种黄金氰化浸出的搅拌设备，适用于比重小、粘度低、沉降速度慢、矿石粒度在-200目占90%以上，矿浆浓度小于45%的黄金浸出、吸附及其它混合作业中。

Double impeller leaching tank is a kind of agitating equipment for gold cyanide leaching. It is suitable for gold leaching, adsorption and other mixed operation with small specific gravity, low viscosity, slow settling speed, ore particle size at -200 mesh accounted for more than 90%, and slurry concentration less than 45%.

### 产品特点 Product Features

1. 矿流运动平稳，矿浆混合均匀，动力消耗少
2. 空气经传动中空轴进入槽内，经叶片搅动，空气分散均匀
3. 采用两个新型叶轮，搅拌槽叶轮直径大，转速低，搅拌功耗小，可减少炭的磨损
4. 搅拌强度适中，槽内矿浆浓度、细度分布一致，可提高氰化的浸出率和活性炭的吸附率
5. 浸出搅拌槽叶轮衬有耐磨橡胶，转速低，使用寿命长

1. Smooth movement of ore flow, even pulp mixture, less power consumption.
2. The air enters the tank through the transmission hollow shaft, and the air disperse evenly with the blade agitation.
3. Adopt two new type impellers, the agitation tank is featured with large impeller diameter, low rotation speed, small power consumption, which can reduce the wear of carbon.
4. Moderate agitation intensity, and uniformly distribution in pulp concentration and fineness, which can improve the leaching rate of cyanidation and the adsorption rate of carbon.
5. The impeller of this leaching tank is lined with wear-resistant rubber, low rotation speed and long service life.

### 技术参数 Technical Parameters

规格型号 Model	槽体规格 (直径x高度) Tank Spec.(D x H) (mm)	有效容积 Effective Volume (m <sup>3</sup> )	叶轮转速 Rotating Speed of Impeller (r/min)	叶轮直径 Diameter of Impeller (mm)	电机功率 Motor Power (kw)	槽体重量 Tank Weight (kg)	总重量 Total Weight (kg)
SJ2.0X2.5	2000X2500	7.07	52	909	2.2	1609	2144
SJ2.5X2.5	2500X2500	10.8	43	935	4	2159	2729
SJ2.5X3.15	2500X3150	13.92	52	935	2.2	2398	3095
SJ3.0X3.0	3000X3000	19	43	1130	4	3480	4583
SJ3X3.15	3000X3150	20	43	1130	4	3480	4160.6
SJ3X3.5	3000X3500	22.97	43	1130	4	3211	4334.6
SJ3.15X3.55	3150X3550	25.73	43	1260	4	3433.5	4322.8
SJ3.5X3.5	3500X3500	31.3	52	1310	5.5	3480	5025
SJ3.5X4	3500X4000	35.6	52	1310	5.5	4230	5429
SJ3.55X4.0	3550X4000	36.8	43	1310	4	4260	5025
SJ3.7X4.2	3700X4200	42	42	1310	4	5266	6153
SJ4.0X4.5	4000X4500	52.78	35	1750	7.5	6397	7569
SJ4.0X6	4000X6000	71	33	1750	11	7681	9200
SJ4.5X5.0	4500X5000	74.75	35	1750	7.5	8614	10864
SJ5.0X5.6	5000X5600	104.5	31	2046	11	8740	14291
SJ5.5X6.0	5500X6000	135.42	31	2100	11	12467	18745
SJ6.5X7.0	6500X7000	215	21	2400	22	17890	25978
SJ7.0X7.5	7000X7500	269	21	2400	22	20505	29030
SJ7.5X8.0	7500X8000	331	23	2900	22	22552	32796
SJ8.0X8.5	8000X8500	402	18.5	3300	30	30559.5	42467.3
SJ8.5X9.0	8500X9000	480	18.5	3300	30	34130	46623



## XCF—KYF型浮选机 XCF-KYF Flotation Machine

### 产品简介 Product Introduction

XCF型与KYF型均属充气式浮选机，XCF型有吸矿浆能力作为吸矿槽，KYF型无自吸能力。作为直流槽，实现槽体水平布置，不用泡沫泵。“U”型槽体减少了槽底积矿，采用大直径圆锥形叶轮，短叶片转子。处理量大，功耗低；叶轮中间设有充分散器，充气分散均匀，混合充分。

The XCF type and the KYF type both belong to the inflatable gas flotation machine, the XCF type has the ability to absorb the slurry as the ore absorption tank, and the KYF type has no self-priming ability. As a DC slot, the horizontal arrangement of the tank body is realized without foam pump. "U" trough reduces bottom deposits, using large-diameter conical impeller and short-blade rotor. Large handling capacity, low power consumption; The impeller is provided with an inflatable disperser in the middle, which is evenly dispersed and fully mixed.



### 技术参数 Technical Parameters

规格型号 Model	有效容积 Effective Volume (m <sup>3</sup> )	处理能力 Capacity (m <sup>3</sup> /h)	叶轮直径 Impeller Diameter (mm)	叶轮转速 Impeller Speed (r/min)	风机风压 Wind Turbine (KPa)	搅拌电机功率 Stir Motor Power (kw)	刮板电机功率 Scraper Motor Power (kw)	单槽重量 Single Cell Weight (kw)
KFC-1	1	0.2-0.1	400	358	≥12.6	5.5	1.1	1154
KFC-2	2	0.4-2	470	331	≥12.7	7.5	1.1	1659
KFC-3	3	0.6-3	540	266	≥19.8	11	1.5	2259
KFC-4	4	1.2-4	620	215	≥19.8	15	1.5	2669
KFC-8	8	3.0-8	720	185	≥21.6	22	1.5	4435
KFC-16	16	4.0-16	860	160	≥25.5	37	1.5	6568
KFC-24	24	4.0-24	950	153	≥30.4	37	1.5	8000

### 技术参数 Technical Parameters

规格型号 Model	有效容积 Effective Volume (m <sup>3</sup> )	处理能力 Capacity (m <sup>3</sup> /h)	叶轮直径 Impeller Diameter (mm)	叶轮转速 Impeller Speed (r/min)	风机风压 Wind Turbine (KPa)	搅拌电机功率 Stir Motor Power (kw)	刮板电机功率 Scraper Motor Power (kw)	单槽重量 Single Cell Weight (kw)
KYF-1	1	0.2-0.1	340	281	≥12.6	4	1.1	826
KYF-2	2	0.4-2	410	247	≥14.7	5.5	1.1	1419
KYF-3	3	0.6-3	480	219	≥19.8	7.5	1.5	1885
KYF-4	4	1.2-4	550	200	≥19.8	11	1.5	2208
KYF-8	8	3.0-8	630	174	≥21.6	15	1.5	4190
KYF-16	16	4.0-16	740	160	≥25.5	30	1.5	6019
KYF-24	24	4.0-24	800	150	≥30.4	30	1.5	7500





## XJK型(A型)浮选机 XJK (A) Flotation Machine

### 产品简介 Product Introduction

机械搅拌式浮选机，发展最早，研究也比较深入，其规格齐全，发展较快在国内外的浮选机生产实践中大量使用。在我国浮选厂中，使用的机械搅拌式浮选机有XJK型浮选机、米哈诺布尔型浮选机(称A型)、棒型浮选机等XJK浮选机广泛用于铜、铅、锌镍、钼、金等有色金属，黑色金属和非金属矿物的粗选精选和反浮选作业。

Mechanical agitation type flotation machine has the earliest development, the study is also more deeply, the specification is complete, the rapid development both at home and abroad of flotation machine is widely used in production practice. In Chinese flotation factory, the mechanical agitation type flotation machine includes XJK type flotation machine, Mihabnoor type flotation machine (type A), rod type flotation machine. XJK flotation machine is widely used in copper, lead, zinc, nickel, molybdenum, gold and other non-ferrous metals, ferrous metals and non-metallic mineral selection of ti and reverse flotation operation.



### 产品特点 Product Features

1. 搅拌力强、药剂耗量较少
2. 可以处理粗粒和较大密度的矿石、能适应复杂流程
3. 叶轮采用高叶片、低转速，叶片与矿浆接触面积大
4. 底部呈半圆型，符合流体动力学特征，可避免粗矿粒沉槽，有效容积大

1. Strong stirring power and less consumption of medicament.
2. It can deal with coarse grains and high density ores, and can adapt to complex processes.
3. The impeller adopts high blade, low rotating speed and large contact area between blade and slurry.
4. The bottom is semi-circular, accord with the characteristics of fluid dynamics, can avoid coarse ore sink, effective volume large.

### 技术参数 Technical Parameters

规格型号 Model	槽体容积 (m³) Volume	生产能力 Capacity (t/min)	叶轮转速 Impeller Rotational (r/min)	传动电动机Motor		刮板电动机Motor		内部尺寸Dimensions(L*W*H) (mm)	重量 Weight (kg)
				型号Model	功率Power (kw)	型号Model	功率Power (kw)		
XJK-0.13	0.13	200	0.05-0.16	Y90L-4	1.5	Y80M2-4	0.75	504*520*700	266
XJK-0.23	0.23	250	0.12-0.28	Y100L2-4	3.0	Y80M2-4	0.75	604*620*820	389
XJK-0.35	0.35	300	0.15-0.5	Y90L-4	1.5	Y80M2-4	0.75	700*700*906	430
XJK-0.62	0.62	350	0.3-0.9	Y132S-6	3.0	Y90L-6	1.1	820*900*1156	630
XJK-1.1	1.1	500	0.6-1.6	Y132M2-6	5.5	Y90L-6	1.1	1100*1100*1269	1300
XJK-2.8	2.8	600	1.5-3.5	Y160L-6	11	Y100L-6	1.5	1750*1600*1450	2325

## BS-K型浮选机 BS-K Flotation Machine

### 产品简介 Product Introduction

BS-K型浮选机主轴侧挂在机架上，轴承体结构轻巧，安装方便，垂直性好，叶轮截面圆锥形，定子呈放射状，磨损较小、寿命长，搅拌力强。“U”形槽体减少了槽底积矿，主轴部件轻，定子安装在槽底上，安装方便。装机功率小，节能；充入压缩空气，气泡分散均匀，泡沫稳定矿粒悬浮性好，回收率高。该产品分为单槽、双槽、三槽、四槽、五槽、六槽等几个单元。无自吸矿浆和空气能力，矿浆流动需阶梯状布置，泡沫返回靠泡沫泵。

The spindle of BS - K type flotation machine side hung on the rack, the bearing structure is light, which is convenient to install and has a good verticality. The impeller section is cone and the stator is radial, which make the impeller not easy wear out and has a long life, strong stirring force. U shaped tub reduced the ore deposition on the groove bottom. The spindle is light, and stator is installed on the tank bottom, and the installation is convenient. Low power consumption, energy-saving. Filling compressed air, air bubbles dispersed evenly, stable foam particles suspension and high recovery rate. The product is divided into the single cell, double cells, three cells, four cells, five cells, six cells. No self-priming pulp and air ability, pulp flow ladder-like arrangement, foam returned by the pump.

### 选用说明 Selection Instructions

订货时除注明型号数量外，必须提供浮选流程及以下内容：

1. 配置方案及给矿方式
2. 刮板数量和传动方式(右传动，左传动)。
3. 给矿箱，中间箱、原矿箱数量
4. 是否提供电器控制柜
5. 闸板按生产厂图纸生产，大型浮选机采用电动闸板

when place the order, pls tell us the quantity and models and also the following information:

1. The design solution and feeding method.
2. The quantity of scrapers and the.
3. The quantity of feeding box, intermediate box, and the raw ore box.
4. If you need the electrical control cabinet or not.
5. The damper will be produced as the drawing. The large-scale flotation will use the electric damper.



### 技术参数 Technical Parameters

规格型号 Model	槽体容积 (m³) Cell Volume	转子速度 Rotational Of Rotor (r/min)	风压 Wind Pressure (MPa)	处理量 Capacity (m³/min)	电动机功率 Motor Power (kw)	内部尺寸 Inside Dimension (L*W*H) (mm)	单槽重量 Cell Weight (kg)
BS-K2.8	2.8	248		0.4-3	Y160M2-8/5.5	1550*1550*1350	1740
BS-K4	4.0	210		0.5-4	Y160L-8/7.5	1850*1850*1550	2568
BS-K8	8	180	0.015	1.0-8.0	Y180L-6/15	2350*2350*1950	4539
BS-K16	16	160		2.0-15.0	Y250M-8/30	2800*2800*2400	8131
BS-K24	24	154		7-20	Y280S-8/37	3200*3200*2800	11107





## BF型浮选机 BF Flotation Machine

### 产品简介 Product Introduction

该产品是在SF型基础上改进的强搅拌力浮选机，用于铁矿等比重较大的矿物选别，特点是在SF型基础上加有起泡板，采用离心式叶轮，搅拌力大。

BF Flotation Machine with a strong agitating force, which is improved on the SF Flotation. It is suitable for separating of minerals with a large specific gravity like iron ore. Compared with SF Flotation machine, it has a frothing plate and adopts centrifugal impeller, which has a strong agitating force.



### 产品特点 Product Features

1. 吸气量大、功耗低
  2. 每槽兼有吸气、吸浆和浮选自成浮选回路，不需任何辅助设备，水平配置，便于流程的变更
  3. 槽内矿浆为下循环，有利于粗粒矿物的悬浮回收
  4. 设有矿浆面的手控、自控和电控装置，调节方便
  5. 叶轮由闭式双截锥体组成，可产生强的矿浆下循环
1. Large suction, low power consumption.
  2. Each tank has suction, suction and flotation circuit, without any auxiliary equipment, horizontal configuration, easy to change the flow.
  3. The Slurry in the cells is cycling under the machines, is good for the coarse particle floating and recovery.
  4. It's with the hand control device, automatic control device and electric control device. Easy for operation.
  5. The impeller is composed of closed double truncated cone, which can produce strong slurry cycling under the machine.

### 技术参数 Technical Parameters

规格型号 Model	有效容积 Effective Volume (m³)	外形尺寸 Dimensions (L*W*H) (mm)	叶轮直径 Impeller Diameter (mm)	叶轮圆周速度 Impeller Rotation speed (m/s)	空气吸入量 Air Suction Amount (m³/m².min)	电动机型号 Motor Model	电动机功率 Motor Power (kw)	处理能力 Capacity (m³/min)	单槽重量 Each Cell Weight (kg)
BF-0.25	0.25	650*600*700	250	6	0.9-1.05	Y100L-6	1.5	0.12-0.28	370
BF-0.37	0.37	740*740*750	286	7.2	0.9-1.05	Y90L-4	1.5	0.2-0.4	470
BF-0.65	0.65	850*950*900	300	7.35	0.9-1.10	Y132S-6	3	0.3-0.7	932
BF-1.2	1.2	1050*1150*1100	450	7.02		Y132M2-6	5.5	0.6-1.2	1370
BF-2.0	2	1400*1450*1120	500	7.5		Y160M-6	7.5	1.0-2.0	1750
BF-2.8	2.8	1650*1650*1150	550	8.08		Y180L-8	11	1.4-3.0	2130
BF-4.0	4	1900*2000*1200	650	8		Y200L-8	15	2.4-4.0	2585
BF-6.0	6	2200*2350*1300	700	7.5		Y225S-8	18.5	3.0-6.0	3300
BF-8.0	8	2250*2850*1400	760	7.5		Y225M-8	22	4.0-8.0	4130

## SF型浮选机 SF Flotation Machine

### 产品简介 Product Introduction

SF浮选机用于分离有色金属、黑色金属、贵金属、非金属矿物和化工原料回收有用矿物。该设备具有如下特点：吸气量大、功耗低。每槽兼有吸气、吸浆和浮选三重功能，自成浮选回路，不需任何辅助设备，水平配置，便于流程的变更，矿浆循环合理，能最大限度地减少粗砂沉淀。设有矿浆面的自控装置调节方便。叶轮带有后倾式的上下叶片，上叶片产生矿浆上循环，下叶片产生矿浆下循环。

SF flotation machine is used to separate non-ferrous metals, ferrous metals, precious metals, non-metallic minerals and chemical raw materials, and to recover useful minerals. The equipment has the following characteristics: large suction volume, low power consumption. Each cell has 3 functions: inhaling air, inhaling slurry ores, flotation. It has the flotation circulation by itself, without any auxiliary equipment, horizontal configuration, easy to change the flow. the slurry circulation is reasonable and can minimize coarse sand precipitation. Equipped with automatic control device of slurry surface, easy to adjust. Impeller with reclining upper and lower blades. The upper blade produces slurry up circulation, and the lower blade produces slurry down circulation.



### 产品特点 Product Features

1. 叶轮带有后倾式双面叶片，可实现槽内矿浆双循环
2. 叶轮与盖板间隙较大，吸气量大
3. 叶轮圆周速度低，易损件寿命长
4. 前倾式槽体，死角小，泡沫运动速度快

1. Impeller with back-tilted double-sided blade, can achieve double circulation of slurry in the tank.
2. Impeller and cover plate clearance is large, suction volume is large.
3. Impeller circumference speed is low, the life of vulnerable parts is long.
4. Forward-tilted groove, small dead angle, fast foam movement speed.

### 技术参数 Technical Parameters

规格型号 Model	有效容积 Effective Volume (m³)	处理能力 Capacity (m³)	叶轮直径 Impeller Diameter (mm)	叶轮转速 Impeller Speed (r.p.m)	搅拌用电动机功率 Motor Power For Agitation (kw)	刮板用电动机功率 Motor Power For Scraper (kw)	单槽重量 Each Cell Weight (kg)
SF-0.37	0.37	0.2-0.4	300	352-442	1.5	0.56	470
SF-0.7	0.7	0.3-1.0	350	336	3	1.1	970
SF-1.2	1.2	0.6-1.2	450	312	5.5	1.1	1400
SF-2.8	2.8	1.5-3.5	550	280	11	1.5	2120
SF-4	4	2.0-4	650	235	15		2600
SF-8	8	4.0-8	760	191	30	1.5	4292
SF-16	16	5.0-16	850	169-193	45	30*2	7415
SF-20	20	5.0-20	730	186	30*2		9823





## CTS (N、B)系列永磁筒式磁选机

CTS (N, B)\_ Series Wet Drum Permanent Magnetic Separator

### 产品简介 Product Introduction

CTS(N、B)系列永磁筒式磁选机适用于湿式选别细颗粒的强磁性矿物，或者除去非磁性矿物中混杂的强磁性矿物。本机可以连续给矿和排矿、磁场深度大、工作间隙大、具有较高的处理能力。其原理是当矿浆进入磁场区时，其中强磁性矿物被吸附在圆筒表面，弱磁性和非磁性矿物被甩掉排出，而吸附在圆筒表面上的强磁性矿物随圆筒旋转、被带出磁场区、用冲洗水冲入精矿槽中，完成分选作业。同一圆筒可配三种槽体，即顺流槽(CTS)、逆流槽(CTN)和半逆流槽(CTB)，以适应不同的选别要求。

1. 顺流槽适用于矿石粒度为6-0mm的粗选和精选。
2. 逆流槽适用于矿石粒度为0.6-0mm的粗选和扫选，以及选煤工业中重介质回收。
3. 半逆流槽适用于矿石粒度为0.5-0mm的粗选和精选，尤其适用于粒度为0.15-0mm矿物的精选。

CTS (N, B) series permanent magnet cylinder magnetic separators are suitable for wet separation of fine particles of strong magnetic minerals, or to remove mixed strong magnetic minerals from nonmagnetic minerals. This machine can continuously feed and discharge ore, the depth of magnetic field is large, the working gap is large, and it has high processing ability. The principle is that when the slurry enters the magnetic field zone, the strong magnetic minerals are adsorbed on the surface of the cylinder, the weak magnetic and non-magnetic minerals are dumped and discharged, while the strong magnetic minerals adsorbed on the surface of the cylinder rotate with the cylinder, are taken out of the magnetic field zone, and washed into the concentrate tank with washing water to complete the sorting operation. For the same cylinder, there are three types of troughs, namely, flow trough (CTS), countercurrent grooves (CTN) and semi-countercurrent grooves (CTB) to suit different selection requirements.

1. Flow trough is suitable for coarse selection and selection with ore particle size of 6-0 mm.
2. Countercurrent tank is suitable for coarse and sweep separation with ore particle size of 0.6-0 mm, and heavy medium recovery in coal preparation industry.
3. Semi-inverse flow trough is suitable for coarse selection and selection of ore with a particle size of 0.5-0 mm, especially for mineral selection with a particle size of 0.15-0.

### 产品特点 Product Features

1. 磁系包贴不导磁不锈钢，确保磁铁不脱落
2. 对生产的适应能力强，能承受较大的给矿量波动、给矿粒度和矿浆浓度的波动
3. 具有场强渐变，平滑过渡的大包角磁系，增加分选带长度和磁翻转次数，实现磁性矿物和非（弱）磁性矿物的高效分离

1. Magnetic wrap is attached to non-magnetic stainless steel to ensure that the magnet does not fall off.
2. It has strong adaptability to production, and can withstand large fluctuation of ore feed volume, ore feed granularity and slurry concentration.
3. High efficiency separation of magnetic minerals and non-magnetic minerals is realized by increasing the length of separation band and the number of magnetic turns.



### 技术参数 Technical Parameters

规格型号 Model	圆筒尺寸 (筒径*筒长) Cylinder Size (mm)	筒表面磁感应强度 Magnetic Induction Of Cylinder Surface(MT)			处理能力 Capacity		电机功率 Power (kw)	筒体转速 Rotating Speed (r/min)	机器总重 Weight (kg)	说明 Remarks
		磁级几何中心值 Geometric Center Of Magnetic Field	扫选区平均值 Sweep Average	最高磁感应强度 Maximum Magnetic Induction	T/h	m <sup>3</sup> /h				
CTS(N.B)-46	400*600		130	160	1-3	5	1.1	45	600	
CTS(N.B)-66	600*600		145	170	5-10	16	1.1	40	705/750/750	永磁 Permanent Magnet
CTS(N.B)-69	600*900		145	170	8-15	24	1.1	40	830/780/910	
CTS(N.B)-612	600*1200		145	170	10-20	32	2.2	40	960/990/1050	
CTS(N.B)-618	600*1800		145	170	15-30	48	2.2	40	1340/1330/1340	
CTS(N.B)-712	750*1200	120	155	180	15-30	48	3	35	1500	
CTS(N.B)-718	750*1800	120	155	180	20-45	72	3	35	2100	永磁 Permanent Magnet
CTS(N.B)-918	900*1800	148	165	190	25-55	90	4	28	2900	
CTS(N.B)-924	900*2400	148	165	190	35-70	110	4	28	3500	
CTS(N.B)-1018	1050*1800	148	165	190	40-75	120	5.5	22	4000	
CTS(N.B)-1021	1050*2100	148	165	190	45-88	140	5.5	22	4500	
CTS(N.B)-1021	1050*2100	160	240	280	45-88	140	5.5	22	4500	左右式 Left and Right
CTS(N.B)-1024	1050*2400	148	165	190	52-100	160	5.5	22	5000	左右式 Left and Right
CTS(N.B)-1024	1050*2400	160	240	280	52-100	160	5.5	22	5000	
CTS(N.B)-1030	1050*3000	160	240	280	65-125	200	7.5	22	6200	
CTS(N.B)-1218	1200*1800	148	165	190	47-90	140	5.5	19	5800	
CTS(N.B)-1218	1200*1800	160	240	280	47-90	140	5.5	19	5800	
CTS(N.B)-1224	1200*2400	148	165	190	82-120	192	7.5	19	6200	
CTS(N.B)-1224	1200*2400	160	240	300	82-120	192	7.5	19	6200	
CTS(N.B)-1230	1200*3000	148	165	190	80-150	240	7.5	19	7200	
CTS(N.B)-1230	1200*3000	160	240	280	80-150	240	7.5	19	7200	
CTS(N.B)-1530	1500*3000	180	240	300	90-170	270	11	14	8100	
CTS(N.B)-1530	1500*4000	180	240	300	115-220	350	11	14	9300	





## SGB湿式强磁板式磁选机

SGB Wet Plate Type High Gradient Magnetic Separator

### 产品简介 Product Introduction

SGB湿式强磁板式磁选机是我公司总结了传统磁选设备的优缺点打破常规设计理念,集磁选、重选于一体,精心研制开发的一种全新磁选装备,具有磁场强度高,除铁效果显著,处理量大,节能、节水,使用简单等优点。湿法加工非金属矿的除铁提纯,特别是对石英砂、钾钠长石等非金属矿的湿式除铁。另外对于赤铁矿,褐铁矿镜铁矿,菱铁矿,锰矿,钽泥矿等微弱磁性矿物具有较好的选别效果。

SGB wet strong magnetic plate magnetic separator is a new magnetic separation equipment developed by our company, which summarizes the advantages and disadvantages of traditional magnetic separation equipment, breaks the conventional design concept, integrates magnetic separation and re-separation, and has the advantages of high magnetic field strength, remarkable iron removal effect, large handling capacity, energy saving, water saving and simple use. Wet processing of iron removal purification of non-metallic minerals, especially for quartz sand, potassium albite and other non-metallic minerals wet iron removal. In addition, for hematite, limonite. The weak magnetic minerals, such as vitrinite, siderite, manganese ore and tantalum ore, have effect.

### 产品特点 Product Features

1. 磁场强度高, 梯度大; 磁板面积大
2. 布料均匀: 采用双层孔板布料, 平稳均匀, 料层薄
3. 卸铁干净: 定制研发了多种专用卸铁皮带供用户选择, 采用高强度优质复合材料使用寿命长, 卸铁效果明显
4. 节能节水, 仅一台小功率驱动电机, 耗电极低, 独特的可控供水系统设计节约水资源

1. High magnetic field intensity, large gradient, large magnetic plate area.
2. Uniform material distribution: using double-layer orifice plate to feed the materials stably and uniformly, and the material layer is thin.
3. Iron removing cleanly: Custom developed a variety of special iron unloading belts for users to choose from, using high-strength high-quality composite materials, long service life, iron unloading effect is obvious.
4. Energy saving and water saving, only a small power drive motor, very low power consumption, unique controllable water supply system design, save water resources.



### 技术参数 Technical Parameters

规格型号 Model	磁板有效宽度 Effective Width Of Magnetic Plate (mm)	磁板有效长度 Effective Length Of Magnetic Plate (mm)	磁场强度 标准配置 (GS)	给矿浓度 Concentration (%)	供水压力 (Mpa)	物料粒度 Material Size (mm)	处理能力 Capacity (t/h)	电机功率 Power Of Motor (kw)	外形尺寸 Dimensions (L*W*H) (mm)
SGB-0815	800	1500	15000	20-25%	≥0.2	≥0.2	8-10	1.1	3600*1300*1800
SGB-1020	1000	2000					10-15	1.5	4100*1500*1800
SGB-1220	1200	2000					15-20	2.2	4100*1700*1800
SGB-1525	1500	2500					20-35	2.2	4600*2000*1800
SGB-2025	2000	2500					25-30	3	4600*2500*1800
SGB-2030	2000	3000					25-30	3	4600*2500*1800
SGB-2525	2500	2500					35-40	4	5100*3000*1800
SGB-2530	2500	3000					35-40	4	5100*3000*1800

## 三盘带式强磁选机

Three Disc Magnetic Separator

### 产品简介 Product Introduction

本机系盘式强磁选机, 适用于钛铁矿、稀土矿、铬铁矿、钨、锡矿、褐铁矿、钨、钼矿、锆英石、金红石、独居石、红柱石、石榴石、兰晶石、长石石英等各种有磁性差异矿物的分选或非金属矿物除铁, 通过本机一次可分选出4种产品, 本机适用于干式选矿。

This machine is a disk type strong magnetic separator, suitable for ilmenite, rare earth ore, chromite, tungsten, tin ore, limonite, niobium, tantalum ore, zircon, rutile, monazite, andalusite, garnet, blue crystal, feldspar, quartz and other magnetic minerals separation or non-metallic mineral iron removal, through this machine can be sorted out four products, suitable for dry mineral processing.



### 工作原理 Working Principle

主机由给矿装置、弱磁滚筒、传动部分、物料输送装置、磁盘、电磁系统、机架等组成。电控部分由控制、调压、整流、仪表等元件组成结构紧凑, 参数稳定, 安装简易, 使用维护方便。

The main engine is composed of ore feeding device, weak magnetic drum, transmission part, material conveying device, disk, electromagnetic system, frame and so on. The electronic control part consists of control, voltage regulation, rectification, instrument and other components. Compact structure, stable parameters, easy installation, easy use and maintenance.

### 产品特点 Product Features

1. 极高的磁场强度, 17000-20000高斯
2. 可以一次分离四种不同的矿物质
3. 可以得到三到四个矿物质的最终浓缩物
4. Ta & Nb品位可达到60%
5. 易于安装, 调整和操作
6. 每个光盘的磁强度在1000-20000高斯之间可调

1. Very high magnetic field intensity, 17000-20000 gauss.
2. Can separate four different minerals in one time.
3. Can get the final concentrate of three to four mineral.
4. Ta & Nb grade can reach 60%.
5. It's easy to install, adjust, and operate.
6. The magnetic intensity of each disc is adjustable from 1000-20000 gauss.

### 技术参数 Technical Parameters

规格型号 Model	磁场强度 Magnetic Intensity(gauss)	磁盘数量 Number Of Disc(pcs)	磁盘直径 Disc Diameter (mm)	转速 Revolution (r/min)	励磁线圈 Exciting Coil (unit)	电机功率 Motor Power (kw)	励磁功率 Exciting Power (kw)	给料粒度 Feeding Size (mm)	给料宽度 Feeding Width(mm)	外形尺寸 Dimension(mm)	处理能力 Capacity (kg/h)	重量 Weight (kg)
3PC-500	17000	3	500	25-40	4	1.1	1.5	0.05-3	210	2800*800*1220	100-500	1900
3PC-600	18000	3	600	22-38	4	1.5	1.5	0.05-3	300	3150*900*1250	120-800	2200
3PCX-600	20000	3	600	22-38	4	1.5	1.5	0.05-3	300	3150*900*1250	80-800	2300





## CXJ-A干粉永磁筒式磁选机

CXJ-A Dry Drum Permanent Magnetic Separator

### 产品简介 Product Introduction

CXJA系列干粉永磁筒式磁选机是一种用于细粉连续除铁的磁选设备，其内部构造采用日本最新先进技术，磁系采用超强永磁钕铁硼材料组成，具有磁场强、吸力大、除铁率高、节能易维护、使用方便等特点。该机可调整进料量的大小，适用于不同物料粒度的要求。

CXJA series of dry powder permanent magnet cylinder type magnetic separator is a kind of magnetic separation equipment for continuous iron removal of fine powder. Its internal structure adopts the latest advanced technology in Japan. The magnetic system is composed of super strong permanent magnet king NdFeB material, which has the characteristics of strong magnetic field, large suction, high iron removal rate, energy saving and easy maintenance, convenient use and so on. The machine can adjust the size of the feed, suitable for different material size requirements.



### 工作原理 Working Principle

它是将圆形的永久磁铁固定在轴上，而非磁性转筒沿着磁场圆周旋转，被吸附的铁杂质被带到磁筒的下方后，铁磁性物质脱离磁场区后因此失去了磁场的吸引而落入弃铁箱，完成整个选铁过程。产品广泛用于玻璃、陶瓷、水泥、磨料磨具、耐火材料、炭黑、粮食、饲料、化工非金属选矿等行业。

It is to fix the circular arc permanent magnet on the axis, and the non-magnetic cylinder rotates along the magnetic field circle. after the adsorbed iron impurity is brought to the bottom of the magnetic cylinder, the ferromagnetic material is removed from the magnetic field area, so it loses the attraction of the magnetic field and falls into the abandoned iron box to complete the whole iron selection process. Products are widely used in glass, ceramics, cement, abrasive, refractory, carbon black, grain, feed, chemical, non-metallic mineral processing industries.

### 技术参数 Technical Parameters

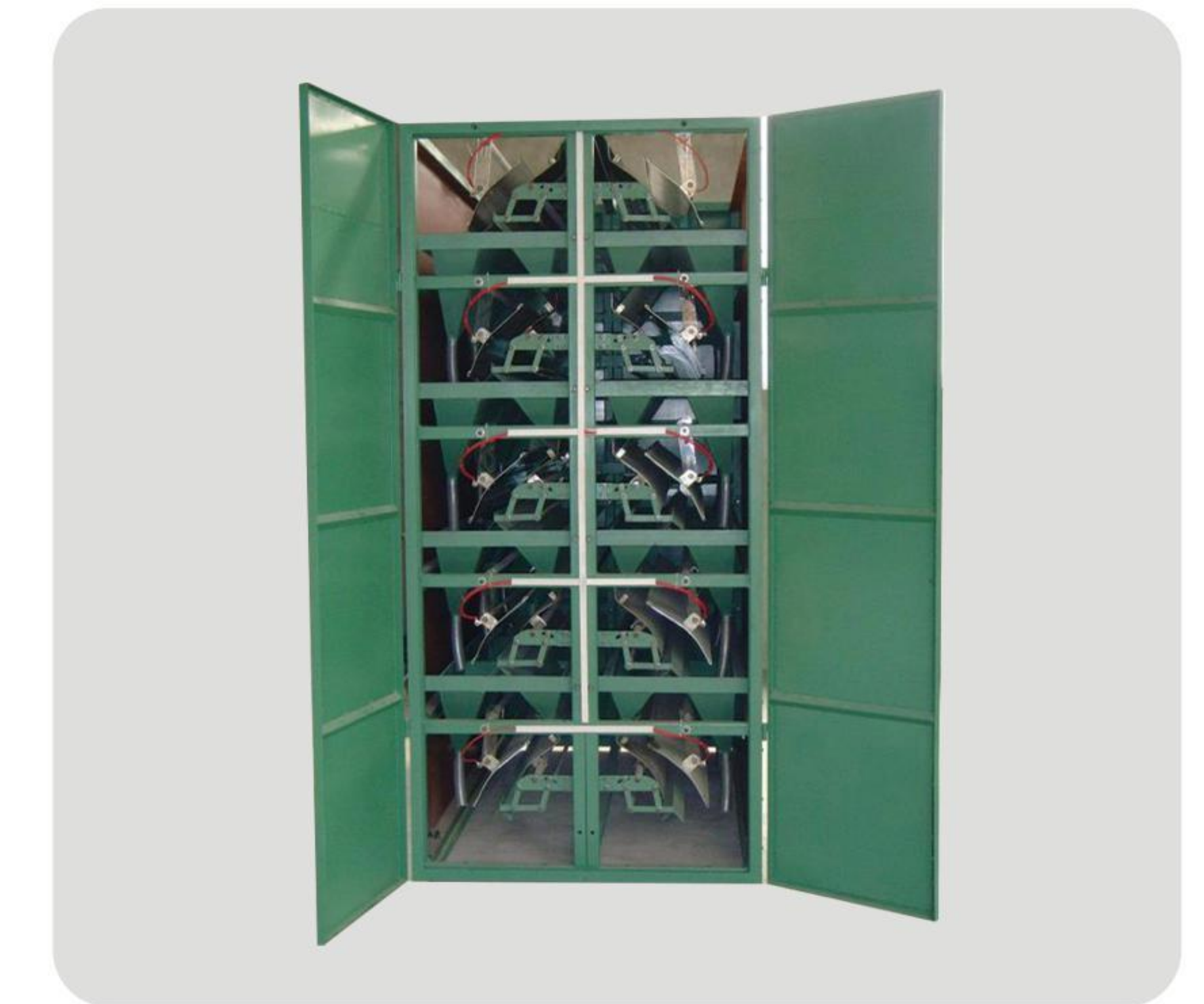
规格型号 Model	圆筒尺寸 Cylinder Size	磁场强度 Magnetic Field Intensity (GS)	处理能力 Capacity (t/h)	电机功率 Power Of Motor (kw)	筒体转速 Rotating Speed (r/min)	总重量 Weight (kg)	减速机型号 Reducer Model
CXJ-A 7524	750*2400	4000	50-80	5.5	40	3860	350
CXJ-A 9024	900*2400		60-90	5.5	35	4570	
CXJ-A 9026	900*2600		70-100	5.5	35	4850	
CXJ-A 1024	1050*2400		70-100	7.5	30	5670	
CXJ-A 1026	1050*2600		80-110	7.5	30	5790	
CXJ-A 1030	1050*3000		100-150	11	30	7245	

## CGD型高压电选机 High Voltage Separator

### 产品简介 Product Introduction

电选机是在电晕丝上供给负高压直流电源，在电晕电极与接地电极的空间产生电晕电场，由于靠接地电极的整个空间带电荷，被选物料或矿砂经过电晕电场时获得电荷的机会相同，而导电率不同，在受到电力和机械力的不同作用下，被选物料或矿砂在电场中落下的轨迹也有区别，这样对导电率较好的、中等的与不导电的其间的差异进行分选。

Electric separating machine supply the negative high voltage dc power in the corona wire. It generates the corona and electric field in the space of corona electrode and the grounding electrode. Since the whole space near the grounding electrode has electrical charge, the chance of obtaining electrical charges when the selected materials or ore sand pass the corona electric field is the same. But electric conductivity is different. Under different actions of electrostatic force and mechanic force, the selected materials or ore sand leave different tracks in the electric fields to tell the differences among those with good conductivity, medium conductivity, and no conductivity.



### 适用范围 Scope of application

电选适应范围：白钨、锡石、锆英石、独居石、钛矿石、金红石、红柱石、石榴子石、电气石、沙金矿、钽铌矿、黑钨矿、辉钼矿、黄铜矿等矿物。上述矿物中在使用重选、浮选、磁选都难以达到合格要求，采用电选后能很好的解决。

Application scope of electrostatic separation: Minerals such as scheelite, cassiterite, zirconite, monacite, titanium ores, rutile, andalusite, garnet, tourmaline, alluvial gold ores, tantalite-columbite ores, wolframite, argentite, and towanite. These minerals are hardly qualified when they are separated by the gravity separating method, flotation method and magnetic separating method. Such problem can be well solved after electrostatic separation is adopted.

### 技术参数 Technical Parameters

规格型号 Model	转鼓 Drum drum (mm)	转速无级变速 (r/min)	静电极 Electrostatic Pole (mm)	高压直流电源 HVDC Power Supply (kv)	供料加热器 Feeder Heater (kw)	进料粒度 Feeding Size (mm)	生产效率 Production Efficiency (kg/h)
CGD220*900	220*900	0-300	2*45	60	5.4	0-2	150-350
CGD220*1200	220*1200	0-300	2*45	60	7	0-2	250-450
CGD220*1500	220*1500	0-300	2*45	60	9	0-2	350-650
CGD320*900	320*1200	0-300	2*45	60	5.4	0-2	200-400
CGD320*1200	320*1200	0-300	2*45	60	7	0-2	300-600
CGD320*1500	320*1500	0-300	2*45	60	9	0-2	450-900





## 螺旋溜槽 Spiral Chute

### 产品简介 Product Introduction

螺旋溜槽是综合了螺旋选矿机、螺旋溜槽、摇床、离心选矿机的特点经冶金部组织有关科研、设计、高校和矿厂等单位进行鉴定通过，认为该设备性能优良，选别指标先进，并获得冶金部科技研究成果奖，现已在有色、黑色金属矿山大量应用。本设备适用于分选粒度0.3-0.02 毫米细料的铁矿、钛铁矿铬铁矿、硫铁矿、锆英石、金红石、独居石、磷乙矿、钨矿、锡矿、钽矿和铌矿以及具有比重差异的其他有色金属、稀有金属和非金属矿物体。

Spiral chute is belong to gravity equipment, which is the new highly effective mineral processing equipment. Especially for separation sand or in beach, riverside, seashore and stream. The spiral chute is made of the fiberglass with wear resistance, corrosion resistance. It is the domestic advanced level, it has been widely used in to separate the particle size 0.3-0.02 mm, like gold, tantalum, niobium, iron, tin, chromite, ilmenite, tungsten, zinc, coal, monazite, rutile, other low grade ores or non-metallic minerals which have a enough specific gravity difference.



### 产品特点 Product Features

- |                             |   |
|-----------------------------|---|
| 1. 高效率，高回收率，分矿准确            | 1. High efficiency, high recovery, accurate ore separation.                                     |
| 2. 无需动力                     | 2. No power.  |
| 3. 重量轻，防锈，耐磨，耐腐蚀            | 3. Light weight, rust-proof, wear-resistant, corrosion-resistant.                               |
| 4. 低操作成本，使用寿命长              | 4. Low operating cost, long service life.   |
| 5. 对给矿量，浓度，粒度，品位的波动适应性强     | 5. Strong adaptability to fluctuation of feeding amount, density, size and grade.               |
| 6. 金刚砂表面形成的摩擦力使选矿效果优于其他塑料表面 | 6. The surface of emery forms strong friction the concentration effect surpass plastic surface. |

### 技术参数 Technical Parameters

型号 Model	螺旋直径 Spiral Diameter (mm)	螺距 Pitch(mm)	安装头数 Number Of Installation heads	给矿粒度 Feeding Size (mm)	给矿浓度 Feeding Density (%)	处理能力 Capacity(t/h)	外形尺寸Dimensions(L*W*H) (mm)	重量Weight (kg)
5LL-400	400	240/180	2	0.2-0.02	25-55	0.15-0.2	460*460*1500	50
5LL-600	600	450/360/270	2	0.2-0.02	25-55	0.4-0.8	700*700*2600	150
5LL-900	900	675/540/405	4	0.3-0.03	25-55	2-3	1060*1060*4000	400
5LL-1200	1200	900/720/540	4	0.3-0.03	25-35	4-6	1360*1360*5230	600
5LL-1500	1500	900/800/680/540	4	0.8-0.037	30-60	6-8	1600*1600*5300	800
5LL-2000	2000	1200	3	2.00-0.04	30-55	7-10	2120*2120*5600	900

## 6S-选矿摇床 6-S Shaking Table

### 产品简介 Product Introduction

选矿摇床是重力选矿的主要设备之一，它广泛应用于选别钨、锡、钼、铌、金和其他稀有金属和贵金属，可用于粗选，精选，扫选等不同作业，选别粗砂(2-0.5mm)、细砂(10.5-0.074mm)、矿泥(-0.074)等不同粒级。也可用于选别铁、锰矿石和煤。当处理钨、锡等矿石时，摇床的有效回收粒度范围2-0.22毫米。摇床具有富矿比高，选别效率高，看管容易，便于调节冲程。在改变横向坡度和冲程时仍可保持床面运行平衡，弹簧放置体内，结构紧凑且能依次得出最终精矿和最终尾矿。



The shaking table is one of the main equipment for gravity dressing. It is widely used in selecting tungsten, tin, tantalum, niobium, gold and other rare metals and precious metals. It can be used in different operations such as coarse separation, selection, cleaning and so on. Different grain grades such as coarse sand (2-0.5 mm), fine sand (10.5-0.074 mm) and mineral mud (-0.074) are selected. It can also be used to select iron, manganese ore and coal. When treating ores such as tungsten and tin, the effective recovery particle size range of the shaker is 2-0.22 mm. Shaker has high ore-rich ratio, high separation efficiency, easy to watch, easy to adjust stroke. It can be preserved when the lateral slope and stroke are changed. The bed surface is balanced, the spring is placed in the body, the structure is compact and the final concentrate and final tailings can be obtained in turn.

### 产品特点 Product Features

- |                                |   |
|--------------------------------|---|
| 1. 选矿的富集比高                     | 1. High enrichment ratio of mineral processing.   |
| 2. 经过一次选别就可以得到最终精矿和废弃尾矿        | 2. Final concentrate and waste tailings can be obtained after one separation.                                 |
| 3. 矿物在床面上的分带明显，所以观察、调节、接取都比较方便 | 3. The separation of minerals on the bed surface is obvious, so it is convenient to observe, adjust and take. |
| 4. 玻璃钢床面，七种不同床面可供选择            | 4. FRP bed face, seven different bed faces available  |

### 6-S玻璃钢摇床技术参数 Technical parameters of 6-S fiberglass shaker

规格型号 Model	床面类型 Type Of Bed	床面选矿面积 Surface Dressing Area(m <sup>2</sup> )	床面尺寸 Bed Size			处理能力 Capacity (t/h)	给矿浓度 Concentration (%)	冲程 Travel(mm)	冲次 Jig Frequency (mm)	耗水量 Consumption (t/h)
			长度Length (mm)	传动端宽度 Width (mm)	精矿端宽度 Concentrate End Width (mm)					
6-S0.5	三种床面可选 Three beds available	0.5	1100	850	430	0.05-0.2	10-30	9-17	280-460	0.1-0.5
6-S1.95		1.95	2100	1050	500	0.3-0.8		12-28	250-450	0.2-1
6-S4.08		4.08	3000	1320	1100	0.4-1.5		6-30	210-320	0.3-1.5
6-S7.6	粗砂床面 Coarse sand bed surface	7.6	4500	1850	1550	1-1.2	18-25	16-22	220	0.7-1
	细沙床面 Fine sand bed					0.5-1		11-16	250	0.4-0.7
	矿泥床面 Mine bed surface					0.3-0.5		8-16	280	0.4-0.7

根据给矿位置的不同，摇床可分为右摇床及左摇床两种形式。右式摇床的给矿位置对于摇动机构来说在右边，左式摇床则给矿位置在左边。The shaker can be divided into right shaker and left shaker according to the location of the ore. The feeding position of the right rocker is on the right side for the shaking mechanism, and the left rocker is on the left side.





## 离心选矿机 Centrifugal Concentrator

### 产品简介 Product Introduction

离心选矿机的转鼓以一定的转数高速旋转，矿浆由给矿分矿器经给矿嘴分两处送入转鼓的内壁上。矿浆随鼓高速旋转，在离心力的作用下重矿物沉积于转鼓的内壁上并随转鼓一起旋转，矿浆中的轻矿粒以一定的差速随转鼓旋转，在旋转过程中以一定的螺旋角由给矿端沿转鼓坡度方向向排矿端旋转流动，到末端经排矿分矿器排出，即为尾矿高富集比高回收率；选矿过程稳定可靠；不添加任何化学药剂，保护环境；用水少耗电量低；低生产成本，易损件耐磨性好，维护简单；设计紧凑，占地小，易于融入现有选矿生产线的工艺中。

The drum of the centrifugal separator rotates at high speed with a certain number of turns, and the slurry is fed into the inner wall of the drum in two places through the ore feeder. Under the action of centrifugal force, the heavy ore deposits on the inner wall of the drum and rotates with the drum. The light ore in the slurry rotates with the drum at a certain differential speed. Wear resistance, simple maintenance, compact design, small area, easy to integrate into the existing processing line.

### 产品特点 Product Features

1. 处理能力大，结构简单；占地面积小，自动化程度高
2. 低生产成本，易损件耐磨性好，维护简单
3. 由于离心选矿机利用离心力的作用，因而强化了重选过程，缩短分选时间

1. Large processing capacity, simple structure, small area, high degree of automation.
2. Low production cost, good wear resistance, simple maintenance.
3. Because the centrifugal force is used in the centrifugal separator, the heavy separation process is strengthened and the separation time is shortened.

### 技术参数 Technical Parameters

规格型号 Model	处理量 Capacity (t/h)	给矿粒度 Feeding Size (mm)	给料浓度 Feeding Density (%)	反冲水量 Backwash (t/h)	精矿产量 Concentrate Production (kg/次)	电机功率 Motor Power (kw)	圆锥转速 Cone Speed (r/min)	压力水 Pressure Water (MPa)	重量 Weight (kg)	外形尺寸 Dimensions(L*W*H) (mm)
STL20	0.2-0.6	0-3	0-50%	1.5-2	2-3	0.75	800	0.04	145	790*785*790
STL30	2-3	0-4		4-6	10-20	1.5	600	0.12	400	1180*1140*1250
STL60	10-20	0-6		10-15	30-40	5.5	460	0.25	1300	1970*1670*1750
STL80	35-45	0-6		17-25	60-70	11	400	0.35	2000	2300*1800*2200
STL100	60-120	0-6		40-60	70-80	18.5	360	0.4	2500	2500*2000*2400
STL120	100-130	0-6		40-60	100-120	22	300	0.5	3200	2700*2200*2600

## 皮碗离心机 Centrifuge Bowl Concentrator

### 产品简介 Product Introduction

皮碗离心机是一种带有螺旋刻槽的连续式重力选矿设备，常用于砂金、岩金回收细颗粒单体金。碗式离心机使用带有螺旋刻槽的橡胶皮碗，类似于旋转螺旋溜槽的原理，其沿与转鼓旋转相反的方向向下螺旋，这种螺旋刻槽通过旋转并保持持续进料产生离心力，从而使黄金被推压到碗壁上。

Centrifuge bowl concentrator is one continuous winding rubber riffle type of gravity concentration equipment, used in the gold mining industry for the recovery of fine gold. The centrifugal bowl concentrator uses one continuous winding rubber riffle similar to a screw thread that spirals downward in the direction opposite of the bowl's rotation. This opposite spiral creates continuous self-cleaning riffles by keeping the feed in a slurry state allowing the gold to pull out and press against the wall; it means the centrifugal bowl concentrator can run all day.



### 产品特点 Product Features

1. 高富集比，高回收率
2. 去除非磁性和磁性砂，且不损失细金
3. 带有螺旋式自清洁的刻槽
4. 紧凑的设计，占地空间较小，易于融入到现有的现况设备中使用

1. High concentrating ratio and recovery for fine gold.
2. Removal of both nonmagnetic and magnetic sands without fine gold loses.
3. Continuous centrifuge bowl with self-cleaning riffles.
4. Compact design requiring less space, easy merged into the existing mining processing.

### 技术参数 Technical Parameters

规格型号 Model	处理能力 Capacity (t/h)	进料粒度 Feeding Size (mm)	给料浓度 Feeding Density (%)	耗水量 Water Rate (t/h)	电机功率 Motor Power (kw)	外形尺寸 Dimension (mm)	重量 Weight (kg)
CB-80	2-5	0-3	10%	1.5-2	1.1	960*850*750	140
KCB-80	1-3	0-3	10%	1.5-2	1.1	1050*800*920	150





## 隔膜跳汰机 Diaphragm Jig Machine

### 产品简介 Product Introduction

本产品为旁动(上动)型, 矩形跳汰机, 其特点是片层比较稳定, 选别效果比较好, 隔膜与传动装置在跳汰室一侧, 维修方便。广泛应用金矿选矿厂回收细粒级高品位矿, 砂金矿山用于选别粗精矿, 在岩金选矿厂配置于磨矿分级回路中提前回收单体粗粒金

This product is side moving (upper moving type) rectangular jig, with the features of stable slice, good separation result, and convenient maintenance, with the diaphragm and drive unit mounted at a side of the jiggling chamber. It is widely used for recovering valuable ore with fine grain size in the gold separation plant, separating rough concentrate in the gold placer, and recovering the monomer coarse gold in advance by being arranged in the grinding classification loop in the gold-bearing rock mine. Especially in the field of manganese ore dressing and fine tin ore dressing, it is used to not only for the separation of fine materials, but also for the rough separation of materials. The maximum feed size is 6-8 mm, but in the case of sorting sands, the maximum feed size is 12 mm.



### 产品特点 Product Features

1. 结构紧凑, 占地面积小, 单位面积处理能力大
2. 具有省水, 连续工作的特点
3. 冲程, 冲次调节方便, 安装与维护简单

1. Simple structure, small area and large processing capacity.
2. Not only save energy, but also work continuously.
3. Simple installation and maintenance.

### 技术参数 Technical Parameters

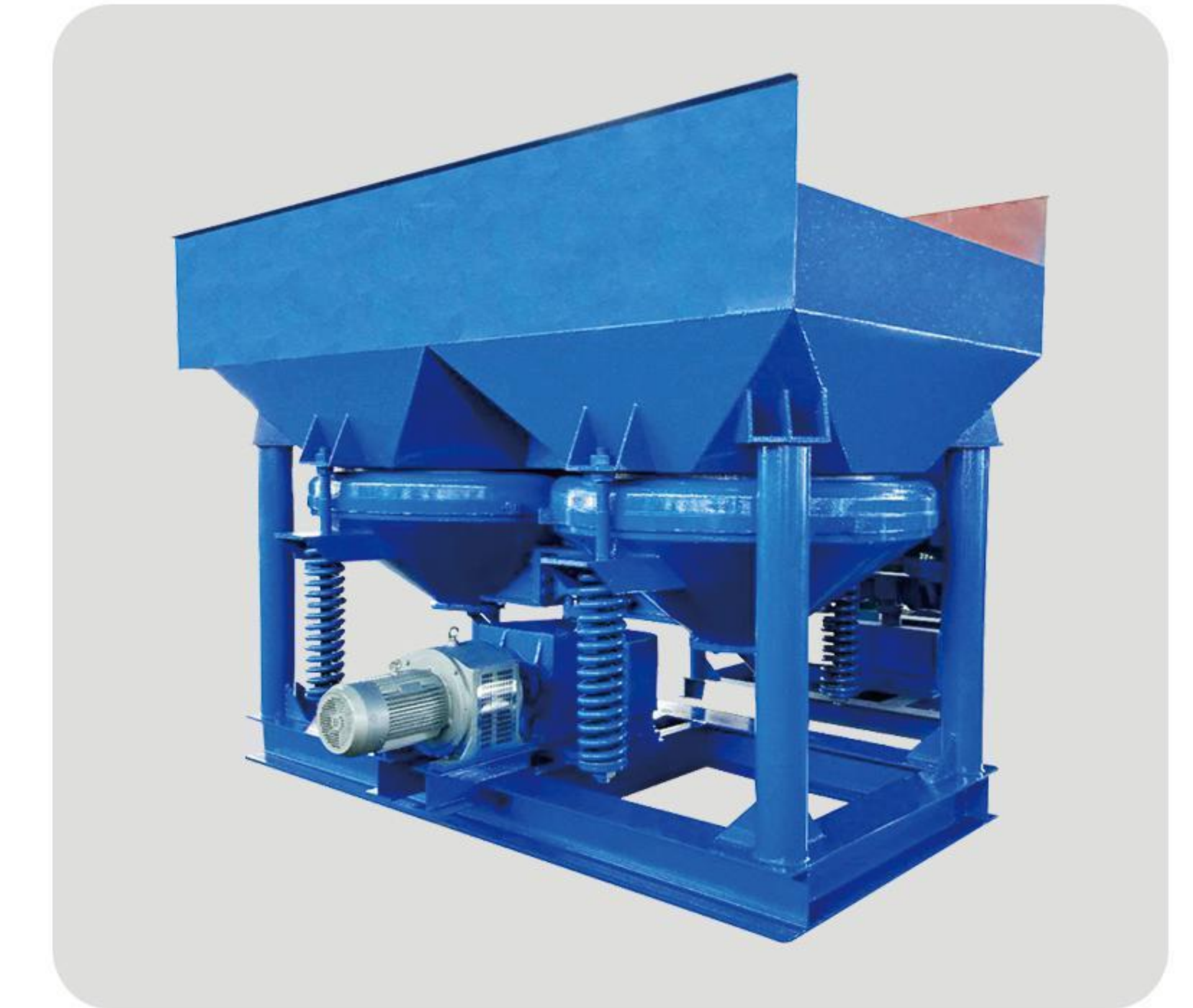
型号Model	给料粒度 Feeding Size (mm)	生产量 Capacity(t/h)	冲次 Time Of Stroker (times/min)	冲程调节范围 Stroke Adjusting (mm)	给矿浓度 Feeding Density (%)	补水量 Measure Of Additional Water (t/h)	电动机 Motor		外形尺寸Dimensions (L*W*H) (mm)	重量 Weight (kg)		
							型号Model	功率Power(kw)				
双斗(Double dippers)	200*300	1-10	1.0-0.3	322~420	0-25.3	15-50	2.1-3.8	Y801-4	0.55	1000*600*500	150	
	300*450	1-12	2.1-6.1					Y90S-4	1.1	1290*1270*1750	745	
单斗(Single dippers)	300*450	≤10	2-5	300	0-18	15-50	1-2	Y90L-6	1.1	650*1030*1588	320	
	400*600A			300			2.1-5.4	Y90L-6	1.1	792*1237*1894	400	
	400*600			76.7-767			2.1-5.4	TZT222-4	1.5	996*1263*1789	500	
	600*900			300			0-25	2.1-6	Y112M-6	2.2	1638*1230*2148	1400

## 锯齿波跳汰机 Saw-tooth Wave Jig Machine

### 产品简介 Product Introduction

JT型锯齿波跳汰机是一种新型的跳汰机是现代重选设备之一, 目前已形成系列推广使用。这种跳汰机采用电磁无级调速, 鼓动均匀, 矿流平稳, 对宽别入选物料适应性强, 对中细粒选别效果好, 且省水, 由于其处理能力大, 选别粒度范围广, 操作维护简单, 主要用于选别砂金、钨矿、锡矿、赤铁矿和海滨砂矿。

JT sawtooth wave jig is a new type of jig, which is one of the modern re-selection equipments. This jig adopts electromagnetic stepless speed regulation, uniform agitation, stable ore flow, strong adaptability to wide-seeded materials, good selection effect for medium-fine particles, and save water. Because of its large treatment capacity, wide selection of particle size, simple operation and maintenance, mainly in the selection of placer gold, tungsten ore, tin ore, hematite and seaside placer.



### 产品特点 Product Features

1. 处理能力大, 选别粒度范围广
2. 高富集比和高回收率
3. 易安装, 易操作, 易维护
4. 锯齿波跳汰脉动曲线使重矿物更容易下沉
5. 比传统跳汰机省水30-40%
6. 适用于选别砂金、锡、钨、赤铁、铁矿、煤等矿物, 特别是在锰矿、重晶石选矿领域中得到了广泛应用

1. Large processing power, wide selection granularity.
2. High enrichment ratio and high recovery rate.
3. Easy to install, easy to operate, easy to maintain.
4. The sawtooth jiggling pulse curve makes it easier for heavy minerals to sink.
5. 30-40% less water than traditional jig.
6. It is suitable for the separation of gold, tin, titanium, hematite, iron ore, coal and other minerals, especially in the field of manganese ore, barite ore dressing.

### 技术参数 Technical Parameters

型号Model	跳汰室 Jiggling Room		隔膜 Diaphragm		给矿粒度 Granulation Of Ore (mm)	处理能力 Capacity(t/h)	功率 Power(kw)	外形尺寸Dimensions(L*W*H) (mm)	重量 Weight(kg)
	形状 Shape	面积 Area(m <sup>2</sup> )	冲程 Stroke	冲次 Impulse					
JT0.57-1	梯形 Trapezoid	0.57	8.5-12	80-180	<6	1.5-3	1.5	1550*780*1530	610
JT1-1		1.04	10-17		<10	2.5-5	2.2	2270*1110*1890	900
JT2-2	矩形 Rectangle	2.28	12-21	50-125	<10	5-10	3	3225*1550*2050	1640
JT3-1	梯形 Trapezoid	3	12-30		<10	7.5-15	5.5	2745*2000*3030	3085
JT4-2	矩形 Rectangle	4	25-57		<25	8-20	7.5	4240*1990*2750	3098
JT4-2S		4	25-57		<25	8-20	4x2	4240*1990*2750	3500
JT5-2	梯形 Trapezoid	4.86	12-30		<10	12-25	7.5	3600*2000*2600	4500





## NZ(F)型中心传动浓缩机 NZ(F) Central Transmission Thickener

### 产品简介 Product Introduction

NZ(F)型(也称TNZ型)浓缩机为中心传动浓缩机,是应用较早的传统型浓缩设备直径12m以下以手动提耙方式,12m以上一般采用电动提耙装置,大型浓缩机一般采用混凝土池子,有超载指示或报警装置。该机结构简单,磨损小,维修方便。

NZ(F) (also named TNZ) thickener is a center-drive thickener, which is a traditional thickening equipment with a history of earlier application. The thickeners with a diameter less than 12m is of manual handle type, and thickeners with a diameter over 12m adopt electric handle devices. Large-scale thickener is usually arranged with a concrete tank, with overload indicating or alarming devices. This machine has the features like simple structure, low wearing and convenient maintenance.



### 选用说明 Selection Instructions

1. 对于有腐蚀性料浆,有防腐型浓缩机,需特别订货
2. 考虑运输,施工工期等因素,根据用户要求,用户须注明是否带浓缩池

1. For corrosive feed pulp, an anticorrosive thickener is available, which shall require a special order.
2. Considering the factors like transportation and construction period, the customer shall specify whether the thickener requires a thickening tank or not.

### 技术参数 Technical Parameters

规格型号 Model	浓缩池 Pond For Concentration		沉淀面积 Sediment Area (m <sup>2</sup> )	耙架转速 Speed Of Frame (r/min)	生产能力 Capacity (t/d)	传动电动机 Transmission Motor		转速 Speed (r/min)	外形尺寸 Dimensions(L*W*H) (mm)	槽重 Groove Weight (kg)	总重 Weight (kg)
	直径 (m) Dia	深度 (m) Depth				型号 Model	功率 Power (kw)				
NZ-1.8	1.8	1.8	2.55	0.5	1.3-5.6	Y90L-6	1.1	910	2000*1960*2900	1085	1490
NZ-3.6	3.6	1.8	10.2	0.4	5-24	Y90L-6	1.1	910	3917*3787*3194	1730	2975
NZ-6	6	3	28	0.3	14-62	Y100L2-4	1.1	1430	6170*5170*5153	4032	8700
NZ-9	9	3	63.5	0.26	32-150	Y132S-6	3	960	10000*10000*5337	12188	16682
NZ-12	12	3.5	113	0.19	≤250	Y132S-6	3	960	15500*12000*6625	24060	33131
NZ-15	15	3.6	176	0.013	≤390	Y132M2-6	5.5	940	17240*16000*7500	35040	46500
NZ-18	18	3.6	250	0.1	≤552	Y132M2-6	5.5	940	19700*18860*7650	48200	-

## NG型周边传动浓缩机 NG Peripheral Transmission Thickener

### 产品简介 Product Introduction

NG型浓缩机为辊轮式周边传动浓缩机,大型浓缩机一般采用此类周边传动过载时辊轮打滑,不需要特别安全装置,池子一般为混凝土结构,为了给电机供电在中心支柱上装有环节点,而设环滑动的集电接点则与耙架连接,并由敷设在耙架上的电缆,将电流从这些接点引入电机。

NG thickener is a kind of peripheral traction thickener of running roller type. Large-scale thickener usually adopts such type of peripheral traction. In the event of skidding of running roller due to overloading, no special safety device is required. Its tank is usually made of concrete. In order to charge the motor, annular nodes are arranged on the central support. The current collection joints with sliding ring are connected with the arm brace, and the current is introduced to the motor through these joints by the cable laid on the arm brace.



### 选用说明 Selection Instructions

1. 辊轮摩擦力小,轨道结冰或超载时辊轮打滑,故不适用于寒冷结冰地区以及量大,浓度高的矿浆
2. 不提供钢板池子

1. Since the frictional force of running roller is low, the running roller is liable to skid in the event of icing on the track or overloading. Therefore, it is not suitable to be used in cold area with the phenomenon of icing, or the ore pulp with large quantity or high concentration.
2. Tank made of steel plate is not provided.

### 技术参数 Technical Parameters

规格型号 Model	浓缩池直径 Thickening Tank Diameter (mm)	浓缩池中心深度 Thickening Tank Depth (mm)	处理能力 Capacity (t/h)	沉淀面积 Sediment Area (m <sup>2</sup> )	电机型号 Motor Model	电机功率 Motor Power (kw)	重量 Weight (kg)
NG-15	15000	3500	390	177	Y132M2-6	5.5	9120
NG-18	18000	3500	560	255	Y132M2-6	5.5	10564
NG-24	24000	3400	1000	452	Y160M-6	7.5	24000
NG-30	30000	3940	1560	707	Y160M-6	7.5	26420
NG-45	45000	5060	2400	1590	Y160L-6	11	50640





## GX型高效浓缩机 GX Type High Efficiency Thickener

### 产品简介 Product Introduction

GX型高效浓缩机在不加絮凝剂情况下为半高效浓缩机，与普通浓缩机相比其结构特点为：中间受料桶长底部有大直径受料盘，给矿均匀，平稳设有消气贮料槽，以消除矿浆中附带气泡，处理量大，底流浓度高。

GX high efficiency thickener is a kind of semi-high efficiency thickener in case of no flocculent is added. Compared with common thickener, it has the following structural features: long interme-diate receiving barrel; with a large-diameter receiving tray arranged at the bottom; uniform stable and smooth feeding. A gettinging and storage tank is arranged for eliminating air bubbles in the ore pulp, which has a large processing capacity and makes the underflow concentration high.



### 产品特点 Product Features

1. 低流浓度高。用于料浆处理，沉砂重量浓度可达40%以上
2. 处理能力大，占地面积小。处理相同体积和浓度的料浆所需沉降面积仅为普通型的20%左右
3. 溢流水质好。溢流水悬浮物含量小于500mg/L，可作为循环用水
4. 可根据用户需要配备自动检测和控制系统

1. Low current concentration is high. For slurry treatment, the weight concentration of sand settling is over 40%.
2. Processing capacity, small area. The settlement area required to treat slurry of the same volume and concentration is only about 20% of the common type.
3. The overflow quality is good. If the suspended matter content of overflow water is less than 500 mg/L, it can be used as circulating water.
4. Automatic detection and control systems are available to users.

### 技术参数 Technical Parameters

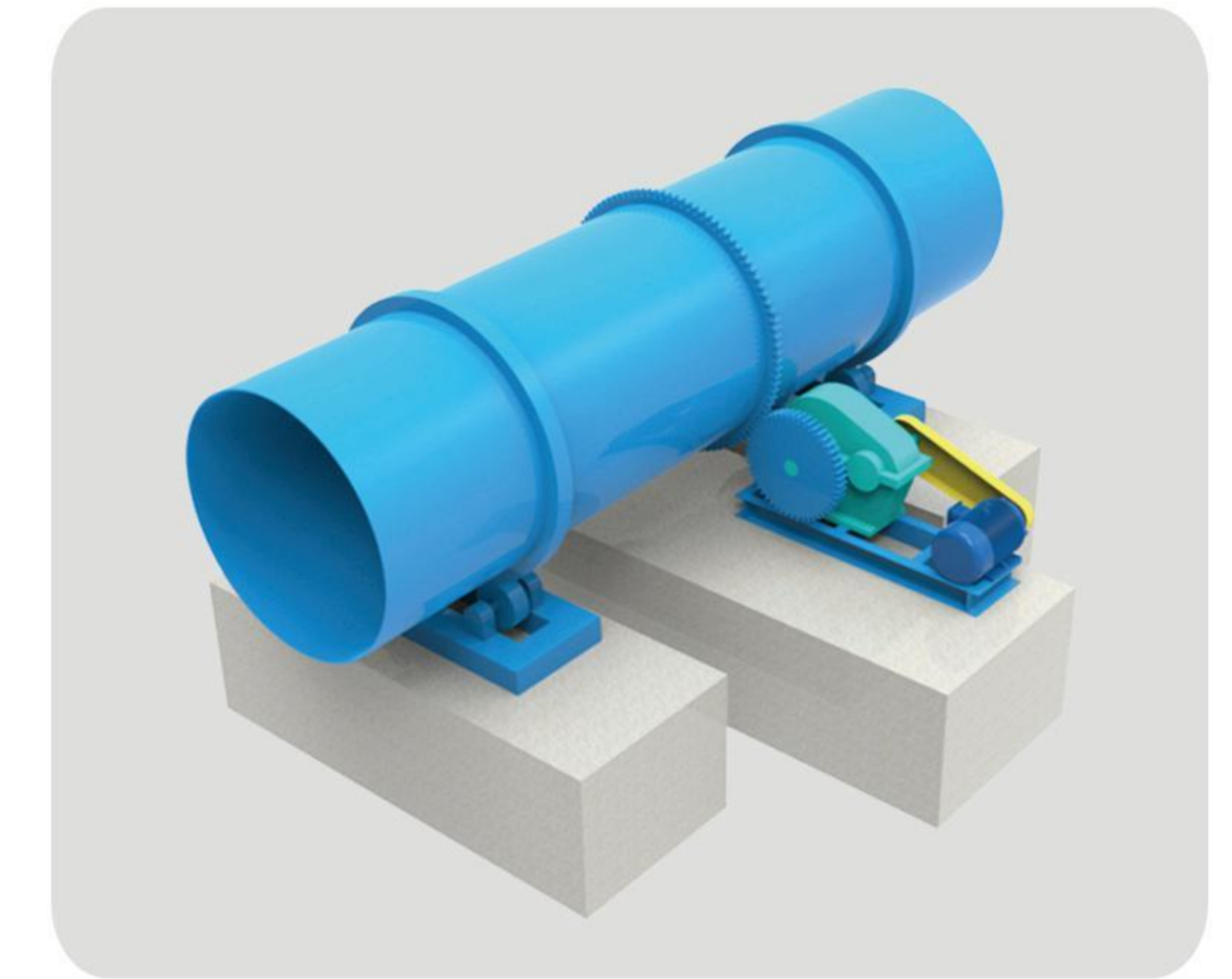
规格型号 Model	槽体内径 Diameter Of Tank (mm)	槽体高度 Slot Height (mm)	沉淀面积 Sediment Area (m <sup>2</sup> )	耙子转速 Revolution Of The Rabble (r/min)	耙子提升高度 Lifting Height Of The Rabble (mm)	驱动电机型号 Driving Motor Model	提升电机型号 Lifting Motor Model	提升电机功率 Lifting Motor Power(kw)	钢槽体重量 Weight Of The Tank (kg)	重量 Weight (kg)
GX-3.6	3600	1700	10.2	1.1	200	Y100L-6	PZ0.8AB	0.8	2829	6650
GX-5.18	5182	2134	21	0.8	300	Y132M1-6	PZ0.8AB	0.8	5340	10460
GX-7.5	7500	2800	44.1	0.427	300	Y132M2-6	Y132S-8	2.2	10258	17320
GX-9	9000	2800	63.6	0.427	300	Y132M2-6	Y132S-8	2.2	15980	23680
GX-12	12000	3600	110	0.35	300	Y132M-4	Y100L1-4	2.2	25589	42756
GX-15	15000	4000	177	0.15	300	YCT200-4B	Y112M-6	2.2	36050	59000

## HT转筒烘干机 HT Rotary Dryer

### 产品简介 Product Introduction

烘干机的热源来自燃烧装置，本烘干机采用顺流式加热方式。因此需要烘干的物料，从进料箱、进料溜进入筒体，即被螺旋抄板推向后。由于烘干机倾斜放置，物料一方面在重力和回转作用下流向后端，另一方面物料被抄板反复抄起，带至上端再不断地扬撒下来，使物料在筒内形成均匀的幕帘，充分与筒内的热气流进行热交换，由于物料反复扬撒，所含的水分逐渐被烘干，从而达到烘干的目的。

The heat source of the dryer comes from the combustion device, this dryer adopts the way of downstream heating. Therefore, materials that need to be dried, from the feed box, feed into the cylinder, that is, pushed back by the spiral plate. Because the dryer is tilted, the material flows to the back end under the action of gravity and rotation on the one hand, on the other hand, the material is copied repeatedly by the plate, taken to the upper end and then continuously spread down, so that the material in the tube to form a uniform curtain, fully heat exchange with the hot air flow in the tube, because the material repeatedly spread, the moisture content is gradually dried, thus achieving the purpose of drying.



### 产品特点 Product Features

1. 该设备可以进行连续投料干燥,也可进行间歇投料干燥
2. 操作方便, 干燥机的转速、落料角调节容易。干燥机的开车, 停车操作非常简单, 不需要特殊的过程控制设备
3. 以传导热为主进行干燥, 干燥面积大, 热效率高, 能量消耗低
4. 物料干燥均匀, 质量稳定。物料在转筒中随转筒转动而流动, 不结坨

1. It can feed the materials for drying continuous or intermittent
2. Easy to operate. It's easy to adjust the rotate speed and blanking angle. No need to use a special control equipment
3. The drying is mainly by the conductive heat. Large dry area, high thermal efficiency and low energy consumption.
4. Uniform drying, Stable quality. The materials is rotating as the cylinder, it's not easy to be lump.

### 技术参数 Technical Parameters

型号Model (m)	生产能力 Capacity (t/h)	主机电 Mainframe		主减速机 Main Speed Reducer		重量 Weight (t)
		功率 (kw)	型号	型号	速比(Speed Ratio)	
φ 1.2×10	2.5	7.5	Y160M-R3	ZL50-16-1		13.5
φ 1.5×12	3.3-4.9	10	Y160L-6B3	JZQ500-III-2F		18.9
φ 1.5×15	4-6	18.5	Y200L-6	JZQ500-III-2F		21
φ 1.8×12	4-6	11	Y200L-6	ZQ50-16II-2	16.46	22.33
φ 2.2×12	7-12	18.5	Y160L-6	JZQ650-III	31.5	37.6
φ 2.2×14	7-12	18.5	Y160L-6	JZQ750-III	31.5	40
φ 2.2×16	12	30	Y225M-6	JZQ750-III	31.5	45
φ 2.4×14	12	30	Y250M-6	JZQ750-III	31.5	51
φ 2.4×18	10-13	37	Y250M-6	ZL85-13-1	27.16	54
φ 2.4×20	10-14	37	Y250M-6	ZL85-13-1	27.16	54.14
φ 3×20	25	55	Y250M-4	ZL100-16-1	41.52	78
φ 3×25	32-36	75	YR280M-4	ZL100-16-1	41.52	104.9





## 陶瓷过滤器 Ceramic Disc Filter

### 产品简介 Product Introduction

陶瓷过滤器是一种新型节能固液分离设备，主要由滚筒系统、搅拌系统、进出料系统、真空系统、滤液排出系统、刮削系统、反冲洗系统、组合清洗(声波清洗、自动酸洗)系统、自动控制系统、罐体和除尘器组成。过滤器下部设有细泥液料槽，细泥液料槽内设有液位控制器。细粒液料槽的两端设有负压集水箱。负压集水箱一侧装有负压连接件固定板，另一侧装有真空泵管，真空泵管与真空泵连接。

该陶瓷过滤器的污泥回收转子由主轴、多层陶瓷滤盘、排出板、多段出水接管、管支撑板和负压连接部件的活动盘组成，该污泥回收转子位于细泥浆中。陶瓷滤盘由多个陶瓷腔微孔板组成，位于细浆状液体材料槽内同一轴线上的多个陶瓷腔微孔板通过出水接管连通。

Ceramic disc filter is a new type of energy-saving solid-liquid separation equipment, which is mainly composed of roller system, mixing system, inlet and outlet system, vacuum system, filtrate discharge system, scraping system, backwashing system, combined cleaning (acoustic cleaning, automatic pickling) system, automatic control system, tank and dust collector. The lower part of the filter is provided with a fine mud tank, and a liquid level controller is arranged in the fine mud tank. The two ends of the fine-grained liquid tank are provided with a negative pressure water collecting tank. One side of the negative pressure collecting tank is equipped with a fixed plate of negative pressure connectors, the other side is equipped with a vacuum pump pipe, and the vacuum pump pipe is connected with the vacuum pump.



### 技术参数 Technical Parameters

规格型号 Model	过滤面积 Filtration Area (m <sup>2</sup> )	滤盘 Filter Disc	滤板数量 Number Of Filter Plates	槽体容积 Tank Volume (m <sup>3</sup> )	装机功率 Installed Power (kw)	运行功率 Operating Power (kw)	外部尺寸Dimensions(L*W*H) (m)
TC-1	1	1	12	0.21	3.5	2.0	1.6*1.4*1.5
TC-4	4	2	24	1.0	7.0	3.0	2.4*2.5*2.1
TC-6	6	2	24	1.2	7.0	6.0	2.4*2.9*2.5
TC-9	9	3	36	1.7	9.0	7.0	2.7*2.9*2.5
TC-12	12	4	48	2.2	11.0	7.5	3.0*2.9*2.5
TC-15	15	5	60	2.7	11.5	8.0	3.3*3.0*2.5
TC-21	21	7	84	4.0	13.5	9.0	4.6*3.0*2.6
TC-24	24	8	96	4.5	16.5	10.5	4.9*3.0*2.6
TC-27	27	9	108	5.0	17.0	11.0	5.2*3.0*2.6
TC-30	30	10	120	5.5	17.5	11.5	5.5*3.0*2.6
TC-36	36	12	144	7.0	23.0	16.0	6.6*3.0*2.6
TC-45	45	15	180	8.5	25.0	19.0	7.5*3.0*2.6
TC-60	60	15	180	12.5	33.0	22.0	7.5*3.3*3.0
TC-80	80	20	240	16.2	40.0	24.0	9.0*3.3*3.0
TC-102	102	17	204	18.5	53.0	35.0	8.8*3.6*3.3
TC-120	120	20	240	20	60.0	40.0	9.7*3.6*3.3
TC-150	150	25	300	24	75.0	47.0	11.2*3.6*3.3

## GW型圆筒外滤式过滤器 GW Drum Filter

### 产品简介 Product Introduction

GW型圆筒外滤式过滤器，属常见普通过滤器，主要用于过滤粒度细，要求产品含水低的矿浆，通过调教电机实现无级变速。具有结构简单，价格低，使用方便维护量小，易损件少等优点。

GW cylinder external filter is a kind of common filter, mainly used for filtering the ore pulp with fine grain size and requiring low water content. Through adjusting the motor, variable speed control can be achieved. It has the advantages like simple structure, low price, convenient operation, less maintenance required and less wear-able parts.



### 选用说明 Selection Instructions

需要与抽气系统，气水分离系(自动放水滤液缸)配套使用配套产品，需单独定货(真空泵、抽气器压力水箱系统)。

It should be matched with air-extraction system and air-water separation system (automatic water discharging filtrate cylinder). The matching products should be ordered separately (vacuum pump, pressure water tank system of air extractor).

### 技术参数 Technical Parameters

规格型号 Model	变(减)速器 Variable (Subtractor)		过滤面积 Filtrate Area (m <sup>2</sup> )	筒体转速 Speed Of Cylinder (r/min)	电动机功率 Motor Power		外形尺寸 Dimensions(L*W*H) (mm)	生产能力 Capacity (t/h)	总量 Weight (kg)
	筒体 Cylinder	搅拌器 Agitator			筒体 Cylinder	搅拌器 Agitator			
GW-3	YCT132-4A		3	0.066~0.662	1.1	0.8	2231*2450*1850	0.3~1.2	2500
GW-5	YCT132-4A		5	0.066~0.662	1.1	0.8	2531*2450*1850	0.5~2	2756
GW-8	YCT160-4B	XWD4-59-0.8	8	0.13~0.26	3	0.8	3043*2892*2370	0.7~3.8	5000
GW-10	YCT160-4B		10	0.13~0.26	3	0.8	3443*2892*2370	1~4	5200
GW-12	YCT160-4B		12	0.3~0.2	3	0.8	3643*2892*2370	1~4.8	5910
GW-20	YCT200-4A	XWD5-59-1.5	20	0.14~0.54	5.5	1.5	4480*4085*2890	3~8	10600





## NE型板链高效斗式提升机 High Efficiency Bucket Hoist With NE Plate Chain

### 产品简介 Product Introduction

NE型板链斗式提升机是由国外引进先进技术研制的新产品，采用自流式装料，重力式卸料。链条是优质合金钢高强度板式链条，耐磨而可靠。驱动部分采用硬齿面减速器。NE系列板链式斗式提升机共有11种型号。NE型板链斗式提升机本机系流入式喂料，物料流入料斗内靠板链提升到顶端，在物料重力作用下自行卸料。物料提升时，几乎无回料现象，因此驱动功率小，理论计算轴功率是环链提升机的25%~45%

NE type plate chain bucket hoist is a new product developed by advanced technology imported from abroad. It adopts self-flow loading, gravity unloading chain is high strength plate chain of high quality alloy steel, which is wear-resistant and reliable. The drive part adopts hard tooth surface reducer. NE series board chain bucket hoist has 11 models. NE type plate chain bucket hoist this machine is inflow feeding, material flow into the hopper by the plate chain lift to the top, under the action of material gravity discharge. During material lifting, there is almost no material return phenomenon, so the driving power is small, and the theoretical calculation shaft power is 25%~45% of the ring chain hoist.



### 产品特点 Product Features

- |  |   |
|--|---|
| <ol style="list-style-type: none"> <li>1. 密封性好，环境污染少</li> <li>2. 操作、维修方便、易损件少</li> <li>3. 使用成本低，由于节能和维修少，使用成本极低</li> </ol> | <ol style="list-style-type: none"> <li>1. Good sealing and less environmental pollution.</li> <li>2. Operation, easy maintenance and less easily damaged parts.</li> <li>3. The use cost is low, because of the energy saving and the maintenance less, the use cost is extremely low.</li> </ol> |
|--|---|

### 技术参数 Technical Parameters

规格型号 Model	输送量 Conveying Capacity(m <sup>3</sup> /h)	最大粒度 Maximum Particle Size (mm)	物料容量 Material Capacity	功率 Power (kw)	斗容 Capacity (L)	斗距 Bucket Distance (mm)	提升高度 Lifting Height (mm)
NE15	10~15	40	0.6~2.0	1.5~4	2.5	203.2	≤37
NE30	18.5~31	55		1.5~11	7.8	304.8	≤37
NE50	35~60	60		1.5~18.5	15.7	304.8	10~50
NE100	75~110	70		5.5~30	35	400	10~50
NE150	112~165	90		5.5~45	52.2	400	10~49
NE200	170~220	100	0.6~1.8	7.5~55	84.6	500	10~50
NE300	230~340	125		11~75	127.5	500	10~47
NE400	340~450	130		18.5~90	182.5	600	10~48
NE500	450~550	140		30~110	260.9	700	10~50
NE600	550~660	150		37~132	330.2	700	10~50
NE800	680~830	165		/	501.8	800	10~50

## TD75型皮带输送机 TD75 Belt Conveyor

### 产品简介 Product Introduction

带式输送机是通用型系列产品，以棉帆布、尼龙、聚酯帆布和钢丝绳芯输送带作牵引构件的连续输送设备，可广泛用于电力、煤炭、矿山、钢铁、建材、化工、烟草、环保、粮食、轻工、石油等众多行业。输送松散密度为500-2500kg/m<sup>3</sup>的各种散状、块状或成件物品，具有运量大、爬坡能力强、噪音小、维护方便、易损件互换性好等特点，便于实现运输系统自动化控制，工作环境的温度为<40℃。

Belt conveyors are universal series products which use cotton canvas, nylon, polyester canvas and steel cord conveyor belts as traction member of continuous conveyor equipment and are widely applied in many industries such as power, coal, mining, steel, building material, chemical, tobacco, environmental protection, grain, light industry and petroleum industry. They convey various kinds of bulk products, massive products and product pieces with bulk density of 500-2500kg/m<sup>3</sup>. Their characteristics are great conveyance ability, strong gradeability, low noise, easy maintenance, good interchangeability of easily damaged parts, easy for the realization of automation control of conveying system. Their working temperature shall be lower than 40°C.



### 产品特点 Product Features

1. DT75型带式输送机具有输送平稳，物料与输送带没有相对运动，能够避免对输送物的损坏
2. 噪音较小，适合于工作环境要求比较安静的场合。
3. 结构简单，便于维护。能耗较小，使用成本低等特点

1. DT75 belt conveyor has smooth conveying, material and conveyor belt have no relative movement, can avoid the damage to the conveyor.
2. Noise is small, suitable for the work environment requirements more quiet occasions.
3. Structure is simple and easy to maintain. Low energy consumption and low cost.

### 技术参数 Technical Parameters

规格型号 Model	运量 Volume (t/h)	运距 Max Length (m)	带宽 Belt Width (mm)	带速 Speed (m/s)	倾角 Inclination (°)	功率 Power (kw)	传动滚筒直径 Drum Dia. (mm)	托辊直径 Roller Dia. (mm)
DT75-500	87	20	500	1	<20	5.5	500	89
DT75-500	127	20	650	1		7.5	500	89
DT75-500	198	15	800	1		7.5	630	89
DT75-500	507	20	1000	1.25		1.1	800	108
DT75-500	742	20	1200	1.25		15	1000	108
DT75-500	1032	30	1400	1.25		22	1000	133





## 渣浆泵 Slurry Pump

### 产品简介 Product Introduction

M, AH, HH系列渣浆泵泵体采用可更换的耐磨金属内衬, 叶轮、护套护板等过流部件均采用耐磨金属。具有使用寿命长, 性能可靠、操作方便等优点。主要用于选矿厂输送精矿浆和排尾矿, 也可用于选煤厂输送介质铝厂输送高温易结晶得料浆以及水泥厂输送料浆等方面。

M, AH, HH series of slurry pump body adopts replaceable wear-resistant metal lining, impeller, sheath, protective plate and other over-current components are wear-resistant metal. It has the advantages of long service life, reliable performance and convenient operation. It is mainly used for conveying concentrate slurry and tailing ore in concentrator, conveying medium in coal preparation plant, high temperature and easy crystallization in aluminum plant and conveying slurry in cement plant.



### 产品特点 Product Features

1. 该系列泵为卧式、垂直中开式、双泵壳结构, 泵体和泵盖带有可更换的金属内衬或橡胶内衬, 内衬可一直用到磨穿为止, 不用更换, 延长维修周期, 降低运行成本。
2. 泵的出口方向可按8个角度旋转安装。
3. 泵的轴承组件采用园统式结构, 便于调整叶轮与前护板的间隙, 维修时可整体拆出。轴承采用油脂润滑。
4. 采用多种速度和多种变型方式, 使得泵在最佳工矿下运行。使用寿命长, 运行效益高, 能满足多类恶劣的输送条件。

1. This series of pumps is horizontal, vertical medium open, double pump housing structure, pump body and pump cover with replaceable metal or rubber lining, lining can be used until wear, no replacement, extended maintenance cycle, reduce operating costs.
2. The outlet direction of the pump can be rotated and installed at 8 angles.
3. The bearing assembly of the pump adopts a circular structure, which is convenient to adjust the clearance between the impeller and the front guard plate, and can be removed as a whole during maintenance. The bearings are lubricated with grease.
4. Adopt a variety of speed and variety of modes, so that the pump in the best industrial and mining operation. long service life, high operating efficiency, and can meet many kinds of bad conveying conditions.

### 选用说明 Selection instructions

渣浆泵使用: 在大流量低扬程区域内, 可以输送强磨蚀渣浆; 在高扬程大流量区域内输送轻磨蚀渣浆。适用于环保、冶金、矿山、煤炭、电力建材等工业部门输送强磨蚀、高浓度渣浆, 该类型泵也可以多级串联使用。渣浆泵密封形式: HS渣浆泵、杂质泵的轴封可采用填料密封、副叶轮密封、填料加副叶轮密封、机械密封等型式。

Slurry pump use: in large flow and low head area, can transport strong abrasive slurry; in high head large flow area transport light abrasive slurry. Suitable for environmental protection, metallurgy, mining, coal, electric power, building materials and other industrial sectors to transport strong abrasion, high concentration slurry, this type of pump can also be used in series. slurry pump seal form: HS slurry pump, impurity pump shaft seal can be used packing seal, auxiliary impeller seal, packing plus auxiliary impeller seal, mechanical seal and so on.

### 技术参数 Technical Parameters

型号Model	最大功率Maximum Power	护套材质Sheath Material	叶轮Impeller	清水性能Water Performance			转速Speed (m)	叶轮Impeller		曲线号Curve Number		
				流量Flow m <sup>3</sup> /h	扬程Lift (m)	最高效率Highest Efficiency(%)		汽蚀余量Cavitation Allowance(m)	数量Number	直径Diameter(mm)	/	
1 1/2 1B-AH	15	M	M	12.6-28.8	3.5-8	6-68	1200-3800	40	2-4	5	152	WPA151B01
		RU	RU	10.8-25.2	3-7	7-52	1400-3400	35		3		WPA151B02A
1 1/2 1C-HH	30	M	M	16.2-34.2	4.5-9.5	25-92	1400-2200	20	2-5.5	5	320	WPA151E01
2 1/2 B-AH	15	M	M	32.4-72	9-20	6-58	1200-3200	45	3.5-8	5	184	WPA215B01
		RU	RU	25.2-54	7-15	5.5-41	1000-2600	50	2.5-5		178	WPA215B02
3/2C-AH	30	M	M	39.6-85.4	11-24	12-64	1300-2700	55	4-6	5	214	WPA32A01
		RU	RU	36-75.6	10-21	13-39	1300-2100		2-4		213	WPA32A01A
3/2D-HH	60	M	M	68.4-136.8	19-38	25-87	850-1400	47	3-7.5	5	457	WPA32E01
4/3C-AH	30	M	M	86.4-198	24-55	9-52	1000-1200	71	4-6	5	245	WPA43A01
4/3D-AH	60	RU	RU	79.2-180	22-50	5-34.5	800-1800	59	3-5	5	245	WPA43A01A
4/3C-AH	30	M	M	97.2-194.4	27-54	9-53	1000-2200	55	/	3	240	WPA43A02
4/3D-AH	60	M	M	126-252	35-70	12-97	600-1400	50	2-5	5	508	WPA43E01
4/3E-HH	120	M	M	126-252	35-70	12-97	600-1400	50	2-5	5	508	WPA43E01
6/4D-AH	60	M	M	162-360	45-100	12-56	800-1550	65	5-8	5	365	WPA64A01
6/4E-AH	120	M	M	180-396	50-110	7-61	600-1600	55	3-8	4	372	WPA64A02
6/4D-AH	60	RU	RU	144-324	40-90	12-45	800-1350	65	3-5	5	365	WPA64A03A
6/4E-AH	120	M	M	144-324	40-90	10-52	800-1600	55	4.5-9	2	371	WPA64A04
6/4D-AH	60	M	M	162-360	45-100	21-64	1000-1600	55	/	2	371	ESY7996
6/4E-AH	120	M	M	126-288	35-80	10-55	800-1600	58	2-2.5	2	365	ESY7997
6/4D-AH	60	M	M	126-288	35-80	10-55	800-1600	58	2-2.5	2	365	ESY7997
6/4E-AH	120	M	M	126-288	35-80	10-55	800-1600	58	2-2.5	2	365	ESY7997
6/4S-HH	560	M	M	324-720	90-200	30-118	600-1000	64	3-8	5	711	WPA64E01M
6S-H	560	M	M	468-1008	130-280	20-94	500-1000	65	4-12	5	711	WPA66A91
8/6E-AH	120	M	M	360-828	100-230	10-61	500-1140	72	2-9	5	510	WPA86A01
8/6R-AH	300	M	M	324-720	90-200	7-49	400-1000	65	5-10	5	510	WPA86A01B
8/6E-AH	120	M	M	360-828	100-230	7-70	400-1140	70	3-6	8	536	WPA86A02
8/6R-AH	300	RU	RU	360-828	100-230	7-52	400-1000	70	2.5-6	4	536	WPA86A03
8/6E-AH	120	RU	RU	360-828	100-230	7-52	400-1000	70	2.5-6	4	536	WPA86F03
8/6R-AH	300	M	M	288-648	80-180	5-47	400-1100	60	3-6	2	510	ESY7998
8/6T-HH	1200	M	M	576-1152	160-320	32-95	450-725	65	6-10	5	965	WPA86E01
10/8E-M	120	M	M	540-1228	150-340	15-61	600-1100	70	4.5-8	4	549	WPA108B02
10/8R-M	300	M	M	540-1080	140-300	18-66	700-1100	62	4.5-7.5	4	549	WPA108B02
10/8E-M	120	M	M	666-1440	185-400	14-60	600-1100	73	4-10	5	549	WPA108B03
10/8R-M	300	RU	RU	540-1188	150-330	10-42	500-900	79	5-9	5	549	WPA108B03A
10/8E-M	120	M	M	612-1368	170-380	11-61	400-850	71	4-10	5	686	WPA108A01AM
10/8R-M	300	RU	RU	540-1180	150-330	12-50	400-750	75	4-12	5	686	WPA108A01AM
12/10ST-AH	560	M	M	936-1980	260-550	7-68	300-800	82	6	5	762	WPA1210A02M
		RU	RU	720-1620	200-450	7-45	300-650	80	2.5-7.5			WPA1210A03AM
14/12ST-AH	560	M	M	1260-2772	350-770	13-63	300-600	77	3-10	5	965	WPA1412A01M
		RU	RU	1152-2520	320-700	13-44	300-500	79	3-8			WPA1412A01AM
16/14ST-AH	560	M	M	1368-3060	380-850	11-63	250-550	79	4-10	5	1067	WPA1614A01
16/14TU-AH	1200	M	M	1699-3798	427-1055	14-75	250-550	75	4.5-6	8	1067	ESY7771
16/14ST-AH	560	M	M	1699-3798	427-1055	14-75	250-550	75	4.5-6	8	1067	ESY7771
16/14TU-AH	1200	M	M	1699-3798	427-1055	14-75	250-550	75	4.5-6	8	1067	ESY7771
18/16ST-AH	560	M	M	2160-5040	600-1400	8-66	200-500	80	4.5-9	5	1245	ESY6544
18/16TU-AH	1200	M	M	2160-5040	600-1400	8-66	200-500	80	4.5-9	5	1245	ESY6544
20-18TU-AH	1200	M	M	2520-5400	700-1500	13-57	200-400	85	13-57	5	1370	WPA2018A01





## 高频感应熔炼炉 High Frequency Smelting Furnace

### 产品简介 Product Introduction

高频感应熔炼炉是感应加热设备输出强交变频电流后，通过感应线圈产生强交变磁场。在磁场的作用下，被加热工件表面成涡旋电流，从而迅速使工件发热。

Induction heating means to produce the alternating magnetic field through induction coil after induction-heating equipment outputs high-frequency current to make the workpiece heated quickly.



### 产品特点 Product Features

1. 采用先进的MOSFET和IGBT技术，实现频率自动跟踪
2. 具有恒流和功率控制功能，可显著优化金属加热工艺，发挥优越性能
3. 过电流、过电压、缺水、缺相等十种类型的故障保护和显示可以提供更高的可靠性和耐久性
4. 安全可靠，不需要万电压的设备，从而能保证安全运行
5. 可用于红外测温，可实现温度的自动控制，提高加热性能，简化手动操作

1. It adopts the most advanced MOS, IGBT frequency conversion control technologies to realize automatic tracking of frequency.
2. It has the constant current and power control function, which can significantly optimize metal heating process, realize the high efficiency and fast heating and bring into play the superior performance of the products.
3. About ten types fault protection and display of over-current, over-voltage, water shortage and phase missing can provide higher reliability and durability.
4. It is safe and reliable, and requires no equipment of ten thousand voltage, and thus can ensure the safe operation.
5. It is available for infrared temperature measurement, which can realize the automatic control of temperature, improve the heating performance and simplify the manual operation.

### 技术参数 Technical Parameters

型号Model	输入电压 Input Power Desire	输出最大功率 Oscillate Power Max	震荡频率 Oscillate Frequency	冷却水要求 Cooling Water Desire	主机/副机体积 Dimensions(L*W*H) (mm)	主机/副机净重 Net Weight (kg)
HCG-5	单相220V Single Phase 220V 50/60HZ	5KW	100-250KHZ	>0.2MPa 2-6L/Min ≤40° C	500*210*460	19
HCG-15		15KW			500*210*460	21
HCG-25		25KW			550*240*480	28
HCG-30	三相380V 3 phase 380V 50/60HZ	30KW	30-100KHZ	0.3Mpa ≥6L/MIN ≤40° C	560*290*550	25/23
HCG-40		40KW			470*260*430	
HCG-50		50KW			560*290*550	35/30
HCG-60		60KW			470*260*430	
HCG-80		80KW			30-80KHZ	
					950*450*500	

## 中频感应熔炼炉 Medium Frequency Smelting Furnace

### 产品简介 Product Introduction

根据我们20多年的经验，中频机更适合熔化。因为频率越低，表面与内部之间的温差越小，中间的透热就越容易。

We use medium frequency machine HCZ for melting job. According to our more than 20 years experience, medium frequency machine is more suitable for melting. Because the lower frequency, the smaller temperature difference between surface and inside, the easier to diathermy in the middle.



### 产品特点 Product Features

1. 安装和操作非常方便，即学即会
2. 超小体积、重量轻、可移动、占地不足1平方米
3. 24小时不间断熔炼能力
4. 省电节能
5. 方便更换不同重量，不同材料，不同起炉方式的炉体，以适应各种熔炼要求
6. 采用中频感应加热电源，比传统中频电源节能20%以上

1. Installation and operation are simple and convenient, can easily to learn.
2. Small size, light weight, removable, covers an area is less than 1 square meter.
3. Smelting capacity of 24 hours continuously.
4. Energy saving.
5. Convenient to change different weight, different materials, different furnace fitness to meet the requirement of a variety of melting.
6. Use the volume medium frequency induction heating power supply and different from the traditional power supply, can save more than 20% energy.

### 技术参数 Technical Parameters

型号Model	输入电压 Input Power Desire	输出最大功率 Max. Output Power (kw)	震荡频率 Oscillate Frequency	冷却水要求 Cooling Water Desire	主机体积 Dimensions (L*W*H)	主机净重 Net Weight (kg)	水冷线缆长度 Cable Length
HCZ-15	三相380V 3 phase 380V 50/60HZ	15	1-20KHZ	≥0.2MPa ≥6L/Min ≤40° C	580*620*1000	75	2-6米 2-6 Meters
HCZ-25		25		580*620*1000	80		
HCZ-35		35		620*560*1350	115		
HCZ-45		45		630*600*1500	120		
HCZ-70		70		630*600*1500	130		
HCZ-90		90		650*600*1520	140		
HCZ-110		110		670*620*160	160		
HCZ-160		160		800*620*1500	200		